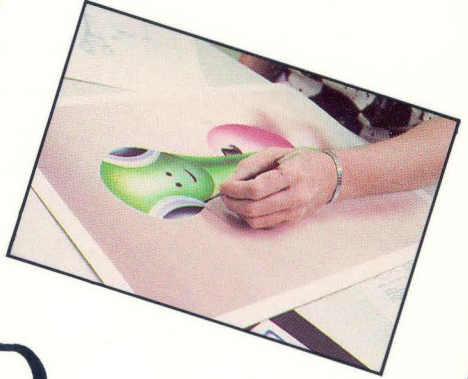


Color
TRANSPARENCY



THIS SIDE
TOWARD SCREEN



Color Slide



'88

'89

LAKE-SUMTER
COMMUNITY COLLEGE

Lake-Sumter Community College

1988 - 1989

***A Public Community College
supported by the State of Florida***

Accreditation

Southern Association of Colleges and Schools

Memberships

Southern Association of Colleges and Schools

Southern Association of Junior Colleges

American Association of Community and Junior Colleges

Florida Association of Community Colleges

Florida Association of Colleges and Universities

Florida Community College Activities Association

NOTICE

The catalog is prepared and presented as an informational guide for students and the general public. Every attempt has been made to assure that all information is accurate and current. However, an institution of higher education constantly reviews its policies and practices in order to improve its services and assure the highest practical standards for those who seek a quality education. Thus, this document represents the most accurate information available at the time of publication and serves as a general guide in areas such as course offerings, programs of study, fees, facilities, student services, general education, degree requirements, personnel listings and related regulations, procedures and policies.


The provisions of this catalog do not constitute a contractual arrangement. The college reserves the right to change or otherwise improve any provision herein and will make every effort to inform students and other interested parties of such changes in an appropriate and timely manner.

Students are responsible for familiarizing themselves with the information in this publication and should consult their counselor, an administrator or the L-SCC Agency Rules manual for additional information.

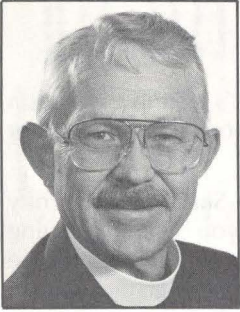
Non-Discrimination Policy

Lake-Sumter Community College is dedicated to the concept of equal access and equal opportunity for all students and employees. The college will not discriminate on the basis of race, national origin, religion, sex, disability, marital status or age, against a student or employee.

Rena D. Poole is Equity Coordinator for Lake-Sumter Community College, 1988. FEAA F.S. 228.2001, Rules 6A-19.10 (g).



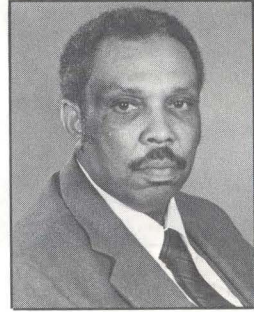
DISTRICT BOARD of TRUSTEES



Dr. Terry W. Jackson
Chairman
Lake County



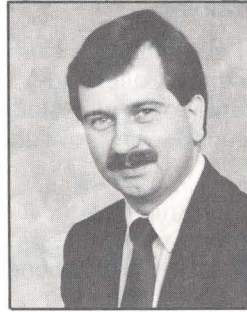
Dr. Tully C. Patrowicz
Vice Chairman
Lake County



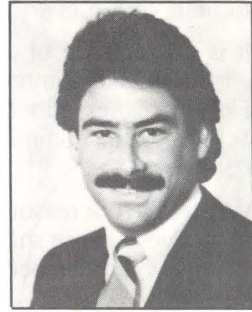
Mr. Albert E. Fogle
Lake County



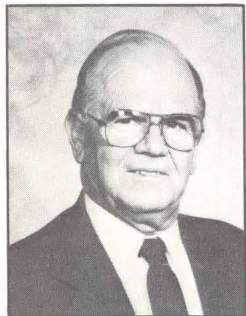
Mrs. Martha Heinrich
Lake County



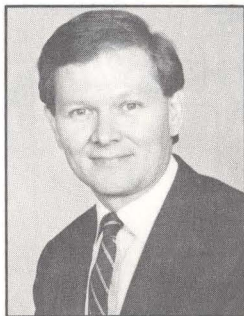
Dr. Robert B. Holstein
Sumter County



Mr. Thomas D. Skidmore
Sumter County



Mr. Harvey L. Spears
Lake County



Mr. Randall Thornton
Sumter County



Mrs. Linda J. Winchester
Sumter County

Davis and Davis, P.A.
Board Attorney



PRESIDENT'S MESSAGE

"How can we help you?" It's a simple question to ask, yet often a much more complex matter to turn into reality.

The faculty and staff of Lake-Sumter Community College know that the help you seek in pursuing your personal education goals may either be quite simple or very detailed and far-ranging. We know that the way in which we respond to your individual needs is paramount to your chances of success. That is why when an L-SCC instructor, counselor, admissions representative, administrator or any other employee asks "How can I help you?" it is a sincere question and one asked without reservation. We *want* to help you in every way possible.

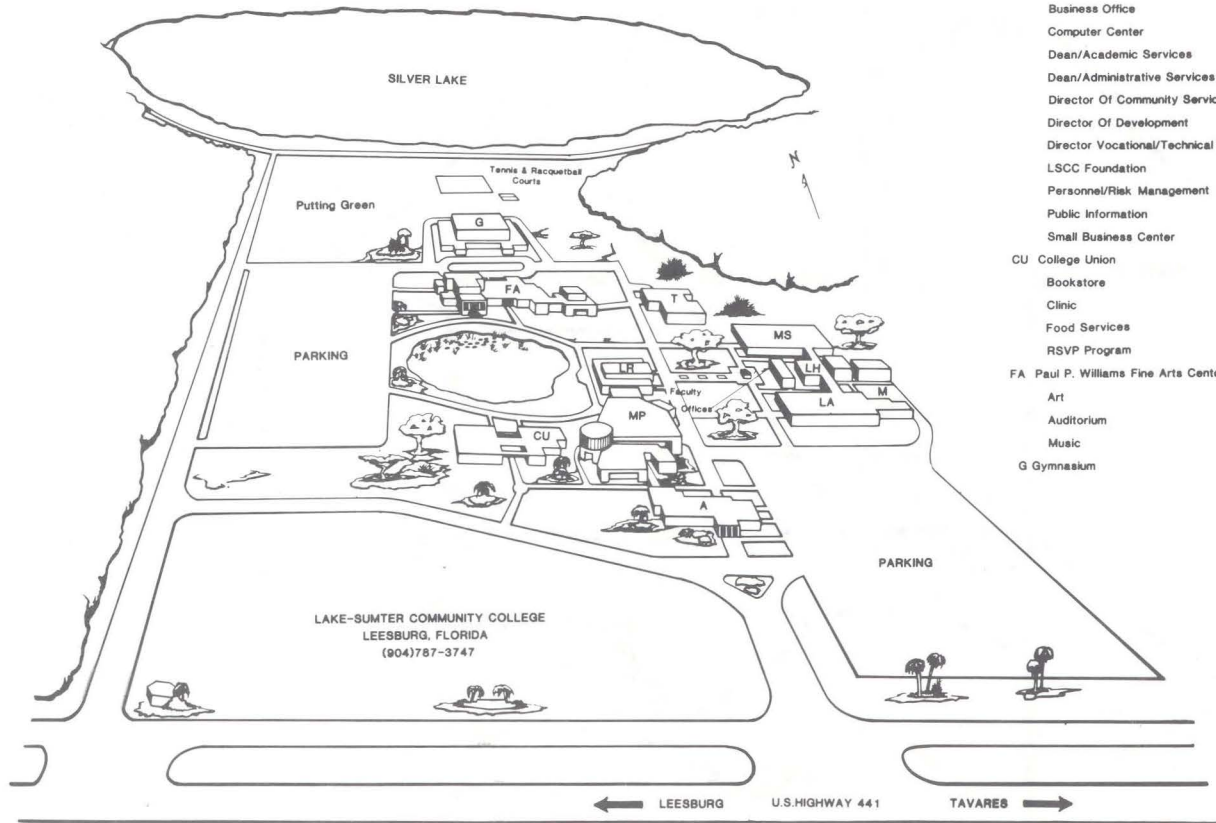
It is this attitude of personal commitment, caring and concern which has elevated Lake-Sumter Community College to a level of excellence among Florida higher education institutions. Our students learn. Our graduates achieve. Our community benefits. We grow and improve. And the cycle continues.

Whatever your reasons for seeking higher education, whatever your personal objectives, please share them with us. Let the same expression of individual caring which has benefited so many others benefit you as well.

With best wishes,

A stylized, handwritten signature in black ink, appearing to read "C. Andersen". The signature is fluid and extends to the right with a long horizontal stroke.

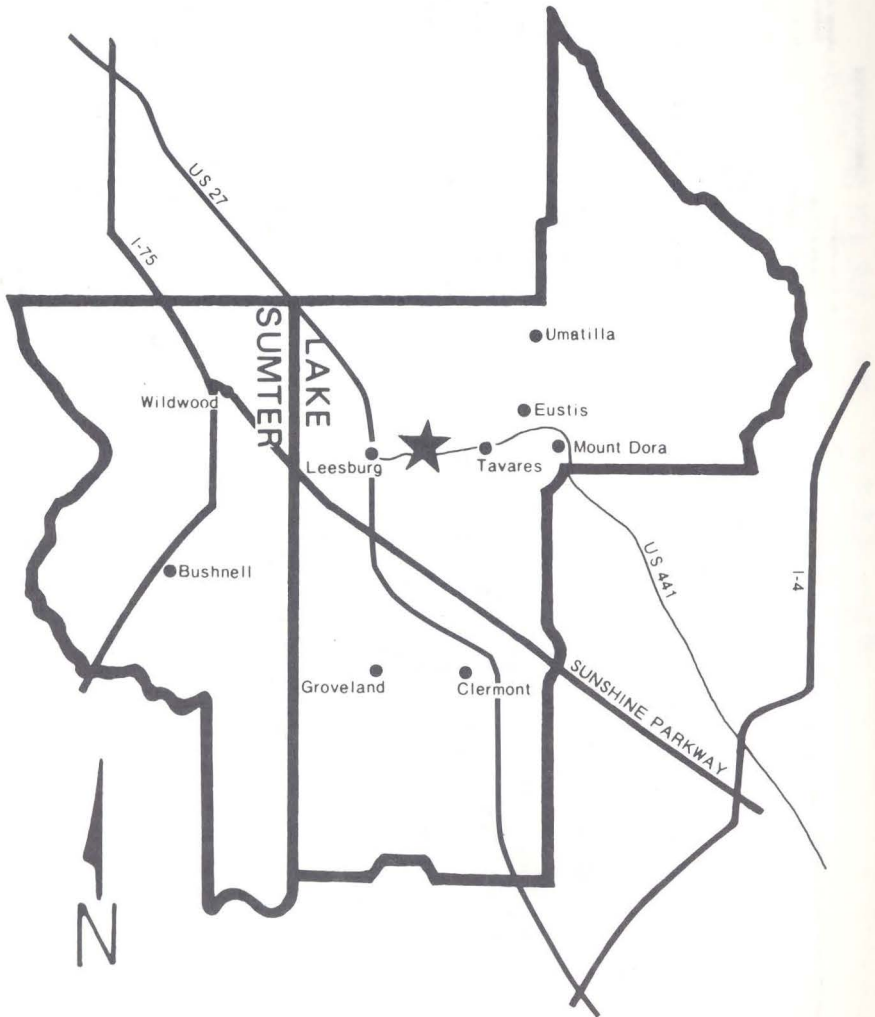
Dr. Carl Christian Andersen
College President



DIRECTORY CODE

A Administration	LA Liberal Arts Classrooms
Business Office	LH Lecture Hall
Computer Center	LR Learning Resources
Dean/Academic Services	Library
Dean/Administrative Services	Media Center
Director Of Community Services	M Maintenance
Director Of Development	MP Multi-Purpose Building
Director Vocational/Technical Ed	Admissions/Records
LSCC Foundation	Business Classrooms
Personnel/Risk Management	Career Center
Public Information	Counseling
Small Business Center	Dean/Student Services
CU College Union	EEA Office
Bookstore	Financial Aid
Clinic	Nursing Classrooms
Food Services	Student Publications
RSVP Program	Television Studio
FA Paul P. Williams Fine Arts Center	MS Math-Science Classrooms
Art	T Technology
Auditorium	Learning Opportunity Center
Music	
G Gymnasium	

Area Map



LAKE-SUMTER COMMUNITY COLLEGE

Highway 441, Leesburg, Florida 32788

Telephone: (904) 787-3747 SUNCOM 649-1011

Toll Free Number for
Sumter County Residents
748-1959

SOUTH LAKE CENTER

664 Montrose Street

Clermont, Florida 32711

Telephone: 394-7520

TABLE OF CONTENTS

College Calendar.....	9
The College.....	13
Administrative Services.....	21
Division of Learning Resources	23
Entering the College	27
Academic Information	37
Financial Information	53
Student Financial Aid	57
Student Services	65
Associate in Arts Degree	77
Associate in Arts Degree Programs.....	85
Associate in Science Degree Programs.....	101
Articulation Programs	117
Certificate Programs	123
Florida's Statewide Course Numbering System.....	129
Course Descriptions	133
College Personnel.....	191
Foundation Directors.....	20
Advisory Committees.....	196
Index	203
Campus/Area Maps	5, 6
Request for Information	205

1988-1989 CALENDAR

1988

January 1988 S M T W T F S 3 4 5 6 7 8 9 10 11 12 13 14 15 16 17 18 19 20 21 22 23 24 25 26 27 28 29 30 31	February 1988 S M T W T F S 1 2 3 4 5 6 7 8 9 10 11 12 13 14 15 16 17 18 19 20 21 22 23 24 25 26 27 28 29	March 1988 S M T W T F S 1 2 3 4 5 6 7 8 9 10 11 12 13 14 15 16 17 18 19 20 21 22 23 24 25 26 27 28 29 30 31	April 1988 S M T W T F S 1 2 3 4 5 6 7 8 9 10 11 12 13 14 15 16 17 18 19 20 21 22 23 24 25 26 27 28 29 30
May 1988 S M T W T F S 1 2 3 4 5 6 7 8 9 10 11 12 13 14 15 16 17 18 19 20 21 22 23 24 25 26 27 28 29 30 31	June 1988 S M T W T F S 1 2 3 4 5 6 7 8 9 10 11 12 13 14 15 16 17 18 19 20 21 22 23 24 25 26 27 28 29 30	July 1988 S M T W T F S 1 2 3 4 5 6 7 8 9 10 11 12 13 14 15 16 17 18 19 20 21 22 23 24 25 26 27 28 29 30 31	August 1988 S M T W T F S 1 2 3 4 5 6 7 8 9 10 11 12 13 14 15 16 17 18 19 20 21 22 23 24 25 26 27 28 29 30 31
September 1988 S M T W T F S 1 2 3 4 5 6 7 8 9 10 11 12 13 14 15 16 17 18 19 20 21 22 23 24 25 26 27 28 29 30	October 1988 S M T W T F S 1 2 3 4 5 6 7 8 9 10 11 12 13 14 15 16 17 18 19 20 21 22 23 24 25 26 27 28 29 30 31	November 1988 S M T W T F S 1 2 3 4 5 6 7 8 9 10 11 12 13 14 15 16 17 18 19 20 21 22 23 24 25 26 27 28 29 30	December 1988 S M T W T F S 1 2 3 4 5 6 7 8 9 10 11 12 13 14 15 16 17 18 19 20 21 22 23 24 25 26 27 28 29 30 31

1989

January 1989 S M T W T F S 1 2 3 4 5 6 7 8 9 10 11 12 13 14 15 16 17 18 19 20 21 22 23 24 25 26 27 28 29 30 31	February 1989 S M T W T F S 1 2 3 4 5 6 7 8 9 10 11 12 13 14 15 16 17 18 19 20 21 22 23 24 25 26 27 28	March 1989 S M T W T F S 1 2 3 4 5 6 7 8 9 10 11 12 13 14 15 16 17 18 19 20 21 22 23 24 25 26 27 28 29 30 31	April 1989 S M T W T F S 1 2 3 4 5 6 7 8 9 10 11 12 13 14 15 16 17 18 19 20 21 22 23 24 25 26 27 28 29 30
May 1989 S M T W T F S 1 2 3 4 5 6 7 8 9 10 11 12 13 14 15 16 17 18 19 20 21 22 23 24 25 26 27 28 29 30 31	June 1989 S M T W T F S 1 2 3 4 5 6 7 8 9 10 11 12 13 14 15 16 17 18 19 20 21 22 23 24 25 26 27 28 29 30	July 1989 S M T W T F S 1 2 3 4 5 6 7 8 9 10 11 12 13 14 15 16 17 18 19 20 21 22 23 24 25 26 27 28 29 30 31	August 1989 S M T W T F S 1 2 3 4 5 6 7 8 9 10 11 12 13 14 15 16 17 18 19 20 21 22 23 24 25 26 27 28 29 30 31
September 1989 S M T W T F S 1 2 3 4 5 6 7 8 9 10 11 12 13 14 15 16 17 18 19 20 21 22 23 24 25 26 27 28 29 30	October 1989 S M T W T F S 1 2 3 4 5 6 7 8 9 10 11 12 13 14 15 16 17 18 19 20 21 22 23 24 25 26 27 28 29 30 31	November 1989 S M T W T F S 1 2 3 4 5 6 7 8 9 10 11 12 13 14 15 16 17 18 19 20 21 22 23 24 25 26 27 28 29 30	December 1989 S M T W T F S 1 2 3 4 5 6 7 8 9 10 11 12 13 14 15 16 17 18 19 20 21 22 23 24 25 26 27 28 29 30 31

COLLEGE CALENDAR 1988-1989

The college calendar consists of five terms and provides for year-round operation of the college as well as year-round scheduling of classes. Fall and spring semesters are sixteen weeks in length. Summer term, of thirteen weeks duration, is also divided into two six-week terms.

FALL SEMESTER

REGISTRATION DATES: August 8 - 23: Late registration (w/\$10 fee) August 24 - August 30

August 22, Monday
August 24, Wednesday

August 30, Tuesday

September 2, Friday
September 5, Monday
September 9, Friday

September 23, Friday
October 10, Monday
October 21, Friday

November 24, Thursday
and

November 25, Friday
November 28, Monday
December 9, Friday
December 14, Wednesday

December 15, Thursday
December 16, Friday
December 19, Monday
through
December 30, Friday

Faculty reports. Staff development day begins at 8:30 a.m.
Fall term day and evening classes begin.

Late registration begins. A \$10 late registration fee will be charged during this period.

Last day for schedule changes (add-drop). Deadline is 4 p.m.

Last day to change from audit to credit. Deadline is 4 p.m.

Last day for late registration for fall term. Deadline is 4 p.m.

Last day to apply for CLAST (test date: October 1)

LABOR DAY - Campus closed.

Last day to remove grades of "I" received in summer terms B and C.

Last day to apply for fall term degree (diploma or certificate).

College Night for high school students. 7:00 - 9:30 p.m.

Last day to withdraw from or change to audit any fall term day or evening class with grade of "W" or "X". Deadline is 4 p.m.

THANKSGIVING HOLIDAYS - Campus closed.

Classes resume.

Final examinations begin at 8 a.m.

Last day for all registrants to complete admission requirements. Registrations will be changed to non-degree seeking if requirements are not completed by this date.

Fall term and final examinations end at 12 noon.

All grades due in the Office of Admissions by 12 noon.

Fall term degree/certificate conferral. Reception.

Teaching faculty begins Christmas Holidays.

CHRISTMAS HOLIDAYS — Campus closed.

SPRING SEMESTER

REGISTRATION DATES: December 5 - 15, January 3 - 4; Late registration (w/\$10 fee) January 5 - 11.

January 3, Tuesday
January 5, Thursday

January 11, Wednesday

January 16, Monday
February 10, Friday

March 20, Monday

March 22, Wednesday
March 23, Thursday
March 24, Friday
March 27, Monday
April 24, Monday
April 27, Thursday
April 28, Friday
May 3, Wednesday

May 4, Thursday

May 5, Friday

Campus Open.

Spring term day and evening classes begin.

Late registration begins. A \$10 late registration fee will be charged during this period.

Last day for schedule changes (Add-Drop). Deadline is 4 p.m.

Last day to change from audit to credit. Deadline is 4 p.m.

Last day for late registration for spring term. Deadline is 4 p.m.

Last day to remove grades of "I" received in fall term.

Last day to apply for spring term degree (diploma or certificate).

Last day to apply for CLAST (Test date: March 11).

Last day to withdraw from or change to audit any Spring Term day or evening class with grade of "W" or "X". Deadline is 4 p.m.

SPRING BREAK — Campus closed.

Classes resume.

Final examinations begin at 8 a.m.

Spring term and final examinations end at 10 p.m.

All grades due in the Office of Admissions.

Last day for all registrants to complete admission requirements. Registrations will be changed to non-degree seeking if requirements are not completed by this date.

Academic Honors Program at 8 p.m. President's Reception follows.

Last Day to apply for CLAST (Test date: June 3)

Spring term Commencement. Degrees awarded; formal ceremony, 8 p.m.

SUMMER TERM A

REGISTRATION DATES: April 24 - May 4; Late Registration (w/\$10 fee) May 8

May 8, Monday

First duty day for summer term A full-time faculty.
Summer terms A and C day and evening classes begin.
Last day for schedule changes term A (Add-Drop). Deadline is 4 p.m.
Last day to change from audit to credit. Deadline is 4 p.m.
Last day for late registration for Summer term A. Deadline is 4 p.m.
Last day to apply for Summer term A degree (diploma or certificate).

May 29, Monday
June 5, Monday

MEMORIAL DAY — Campus closed.
Last day to remove grades of "I" received in spring term.
Last day to withdraw from or change to audit in any summer term A class with grade of "W" or "X". Deadline is 4 p.m.
Last day for all registrants to complete admission requirements for term A. Registration for credit will be changed to non-degree seeking if requirements are not completed by this date.

June 22, Thursday
June 26, Monday
June 27, Tuesday

Summer term A and final examinations end at 4 p.m.
All grades due in the Office of Admissions by 12 noon.
Summer Term A degree/certificate conferral.

SUMMER TERM B

REGISTRATION DATES: April 24 - May 4, June 22; Late registration (w/\$10 fee) June 26.

June 26, Monday

First duty day for summer term B full-time faculty.
Summer Term B classes begin.
Last day for schedule changes (Add-Drop). Deadline is 4 p.m.
Last day to change from audit to credit. Deadline is 4 p.m.
Last day for late registration with \$10 late fee. Deadline is 4 p.m.
Last day to apply for summer terms B and C degrees (diploma or certificate).

July 4, Tuesday
July 25, Tuesday

INDEPENDENCE DAY — Campus closed.
Last day to withdraw from or change to audit any summer term B class with grade of "W" or "X". Deadline is 4 p.m.
Last day to remove grades of "I" received in summer term A.

August 7, Monday

Last day for registrants to complete admission requirements for summer term B. Registrations will be changed to non-degree seeking if requirements are not completed by this date.

August 10, Thursday

Summer terms B and C and final examinations end at 10:00 p.m.

August 10, Thursday
August 14, Monday
September 14, Thursday

All grades due in Office of Admissions by 12 noon.
Summer term B degree/certificate conferral. Reception.
Last day to remove grades of "I" received in terms B and C.

SUMMER TERM C

REGISTRATION DATES: April 24 - May 4; Late Registration (w/\$10 fee) May 8 - 11.

May 8, Monday

First duty day for Summer term C full-time faculty.
Term C classes begin.

Late registration begins. A \$10 late registration fee will be charged during this period.

May 11, Thursday

Last day for schedule change. (Add-Drop). Deadline is 4 p.m.

Last day to change from audit to credit in term C. Deadline is 4 p.m.

Last day for late registration for Summer term C. Deadline is 4 p.m.

May 29, Monday

MEMORIAL DAY — Campus closed.

June 5, Monday

Last day to remove grades of "I" received in spring term.

June 26, Monday

Last day to apply for Terms B and C degrees (diploma or certificate).

July 4, Tuesday

INDEPENDENCE DAY — Campus closed.

July 25, Tuesday

Last day to remove grades of "I" received in summer term A.

Last day to withdraw or change to audit any summer term C class with grade of "W" or "X." Deadline is 4 p.m.

August 7, Monday

Final examinations begin for term C.

Last day for registrants to complete admission requirements for summer term C. Registrations will be changed to non-degree seeking if requirements are not completed by this date.

August 10, Thursday

Summer term C and final examinations end at 10 p.m.

All grades due in the Office of Admissions. Deadline is 12 noon.

August 14, Monday

Summer term C degree/certificate conferral. Reception.

September 14, Thursday

Last day to remove grade of "I" received in summer terms B and C.

THE COLLEGE

PHILOSOPHY

Lake-Sumter Community college strives to educate its students for responsible citizenship within our democratic system. Through a culturally and educationally enriched environment, the college provides for both intellectual achievement and creative growth, thereby encouraging students to reach their maximum potential for themselves and his society. Appropriate faculty, staff and facilities are maintained by the college for fulfillment of these goals.

MISSION/PURPOSE

Within the guidelines of the State of Florida and the Division of Community Colleges, the college provides:

1. Programs paralleling the freshman and sophomore years at four-year colleges and universities, including a program of general education consistent with the Articulation Agreement between the Division of Community Colleges and the State University System.
2. Occupational programs which develop skills necessary for entry into a vocational/technical field, for advancement in a current occupation, or for a mid-life career change, as well as programs designed for business, industry and other organizations.
3. College preparatory programs designed for the educationally disadvantaged.
4. Cultural, social and community service activities intended to enrich not only the lives of the students, but also of the entire community.
5. Credit and non-credit courses for those persons desiring fulfillment of personal educational objectives.
6. A program of student services, including admissions, orientation, financial aid, and counseling, which will assist students in making meaningful and appropriate academic, career and personal decisions.

LAKE-SUMTER COMMUNITY COLLEGE: AN OVERVIEW

Lake-Sumter Community college was authorized by the 1961 Florida Legislature as the result of efforts of citizens in Lake and Sumter counties. With the appointment of Dr. Paul P. Williams as first president, the college began

operating on January 2, 1962, as part of the state community college system. Classes started on September 5, 1962, with 137 day students and 225 evening students. Tuition was \$8 per semester hour.

After outgrowing temporary facilities in Leesburg, groundbreaking for the permanent campus took place on May 18, 1964, with Governor Farris Bryant and Dr. James Wattenbarger in attendance with local officials. The first college commencement was held on June 5, 1964, in the Leesburg High School Auditorium with 39 graduates receiving recognition from Commissioner of Agriculture Doyle Conner.

With the help and assistance of leading citizens, educators and political figures, the college grew rapidly and the campus expanded throughout its more than 70 acre site on U.S. Highway 441, across from the Leesburg Municipal Airport and bordering on beautiful Silver Lake. Among the major facilities are modern classrooms and laboratories, a Learning Resources Center, College Union, gymnasium, technical education facility, The Paul P. Williams Fine Arts Center, bookstore, and Food Service Center. The latest facilities addition is the Multi-Purpose Building, which was completed in the summer of 1986. Among other things, it contains classrooms and laboratories for Nursing and Business programs, the Career Center, a television studio, an art gallery and museum, and various faculty, administrative and student activities offices.

Dr. Robert S. Palinchak became the college's second president in October, 1980. He was succeeded in July, 1987 by Dr. Carl Christian Andersen, under whose executive leadership the college continues to broaden and strengthen its capabilities to meet personal and community higher education needs.

Located near the geographic center of Florida, L-SCC is surrounded by rolling hills and marsh lands abounding with wildlife. With more than 1,400 named lakes, the Lake-Sumter area includes many outdoor recreation areas and suburban type living.

Serving more than 5,000 students annually, Lake-Sumter Community College continues to have a major impact on the surrounding region. The curriculum continues to broaden and new programs are under way in areas including word processing, nursing, digital electronics and computer science. Programs and courses also are offered at L-SCC's South Lake Center in Clermont. In addition, high school students who qualify for dual enrollment can take various L-SCC courses while completing their secondary education. Also, a unique articulation program with the University of Central Florida, enabling students to complete certain Bachelor's degree studies at the college, is proving to be highly successful.

Complementing its academic offerings, Lake-Sumter Community college features a variety of athletic, leisure-time/personal enrichment and cultural entertainment programs and activities.

all ways the institution strives to fulfill its role and mission as a public, comprehensive college dedicated to the service of its community.

LAKE-SUMTER COMMUNITY COLLEGE FOUNDATION, INC.

A group of concerned and caring Lake and Sumter County citizens comprise the Lake-Sumter Community College Foundation. Their purpose is to continue to fulfill and expand the college's mission of excellence in education, service to the community and financial assistance to qualified students.

Since its origin, the Foundation has supported the student scholarship program, the Children's Theatre, the Performing Arts Series, the Brain Bowl, the College music program, the College library, and the nursing programs. Because L-SCC is governmentally assisted but not fully supported by the State of Florida, private support is essential to the college.

THIS SIDE TOWARD SCREEN



Such private support is made possible through donations to the Foundation by individuals, civic groups, businesses and organizations. The Foundation is a non-profit corporation, and all gifts it receives are tax deductible in accordance with Internal Revenue Service regulations.

Your participation as a donor may provide significant tax advantages to you. You are encouraged to discuss arrangements for your individual contributions with an L-SCC Foundation representative. Also, you may wish to consult your attorney, tax consultant or other financial advisor for additional advice about tax incentives and advantages open to you as a donor.

In addition to being one of the simplest ways to distribute your estate, your *will* can be a creative vehicle through which to make a thoughtful gift.

Gifts of *cash, securities, real estate and/or personal property* can be used to enhance existing programs. Items can include livestock, crops, business inventories, antiques, jewelry, artwork, collections of value, or a range of other choices.

A growing number of companies, as well as many civic and service organizations, offer *matching donations* equal to those made by their employees or members. Please see if such a program applies to your L-SCC contributions. The L-SCC Foundation has an extensive list of such matching gifts companies. Simply call the Foundation office to inquire about your company. Also, L-SCC student scholarships and various other forms of student aid and college support can be arranged for organizations wishing to offer this type of support.

Life insurance policies naming the Foundation as owner and beneficiary contribute substantially to L-SCC programs and provide significant tax benefits to you, the donor, as well.

Trusts can be established to pay income to you and/or another for life or a specified time. The property passes to the Foundation when individual benefits terminate.

A *charitable remainder annuity trust* is a way to make a gift to L-SCC while allowing you to retain an income from your property for life. Like the annuity trust, the *charitable remainder unitrust* provides for a gift to the college which returns an income. The income from a unitrust rises or falls with the value of the assets placed in the trust.

All of the ideas mentioned can include a loving tribute to a friend or loved one. There may be no more meaningful way to honor than by a gift with lasting meaning.

Honor and memorial funds for friends, associates or loved ones are sincere and lasting expressions of your feelings. Honor funds may include birthday remembrances, wedding anniversaries, graduations, special achievements, new arrivals and other commemorative events and occasions. For all donations to these funds, the Foundation will provide appropriate notification of your gifts to the person you designate.

ENDOWMENT AND TRUST FUNDS

Lake-Sumter Community college has several endowments and trust funds that have been set up by interested parties to provide fiscal support for noteworthy projects and programs. Monies that accrue from such funds are used to assist students, faculty, program development, cultural activities and other college-related general programs. Some funds are specific in nature and designate a specific program or goal. Others are general or undesignated and are left to the discretion of college officers.

The L-SCC Foundation, Inc. administers endowments and trust funds. Methods such as permanent memorial funds, endowments and the sponsoring of scholarships are among the options available to potential benefactors. For more information, contact Suzanne K. Reynolds, the Executive Director, at (904) 787-3747.

The following funds are representative of L-SCC endowments and trust funds. The public is welcome to make contributions to these funds or establish new ones in keeping with personal or corporate goals.

The *BARTCH TRUST* provides scholarships for migrant and minority students in Lake County.

The *DR. SCOTT COLE TRUST* provides monies for the promotion of L-SCC performing arts activities.

MR. JERRY COLLINS, owner of the Sanford-Orlando Kennel Club, provides monies each year for student scholarships at L-SCC.

The *FILOMENA ARBORIO DILLARD MEMORIAL FUND* was established to benefit a Eustis High School student who has shown academic achievement.

The *FLORIDA ACADEMIC IMPROVEMENT TRUST FUND* through matching funds from the State of Florida, provides monies for special projects and equipment for the L-SCC campus.

The *FLORIDA PUBLIC RELATIONS ASSOCIATION-LAKE HIGHLANDS CHAPTER* presents an award to an L-SCC student majoring in communications, journalism, speech, graphic arts or public relations.

The *C.V. GRIFFIN FOUNDATION* provides for students who have financial needs in the area of nursing.

The *ORVAL HAGGERTY SCHOLARSHIP FUND* assists a high school junior or senior student in the Mt. Dora area who plans to attend L-SCC.

The *HAWTHORNE MEMORIAL FUND* provides scholarship money for L-SCC students.

The *GINNY JONES MEMORIAL SCHOLARSHIP ENDOWMENT FUND* provides scholarships for Lake-Sumter students; the endowment was funded

ENTERING THE COLLEGE

REQUIREMENTS FOR ADMISSION

Beginning Freshman/Degree Seeking Students

Students entering college for the first time may be admitted if they:

- are graduates of state accredited secondary schools
- have earned a high school equivalency diploma through any State Department of Education based on the General Educational Development Tests.
- have earned USAFI GED diploma
- For students who are awarded high school diploma after August 1, 1987:
 - (a) No Florida high school graduate shall be admitted to the Associate in Arts degree program if he has not successfully completed the requirements set forth in S.232.246 or unless he has been awarded a general education development diploma, provided the examination completed for such diploma was in the English language.
 - (b) Nonresident students may be admitted to the community college upon such terms as the college may establish. However, effective August 1, 1987, such terms for non-residents admitted to the Associate in Arts degree program shall include, but shall not be limited to, completion of a secondary school curriculum which includes 4 years of English and 3 years each of mathematics, science, and social studies, or a high school equivalency diploma; however, in lieu of the English requirement, a foreign student may use 4 years of instruction in his native language or another language which was the language of instruction in the secondary school attended.

Transfer Students.

- Transfer students will be accepted from other colleges or universities.
- Courses which were completed with grades of "D" or higher at other regionally accredited institutions are acceptable for transfer credit at Lake-Sumter Community College.
- You must request that each college or university you previously attended send a transcript of your record directly to the Admissions Office.

____ Failure to furnish complete and accurate information may result in cancellation of registration and loss of all credits earned at this college.

SPECIAL ADMISSIONS

Non-Degree Seeking. Applicants may enroll in college for personal enrichment, special interest, job improvement, or teacher certification. Applicants must be at least 19 years of age, have a high school diploma or GED. The student may register for credit or audit. No transcripts of previous high school or college coursework are required.

Non-high School Graduate. First-time college applicants who are at least 19 years of age and have not graduated from high school, and high school certificate holders who satisfy all other requirements are eligible for admission under the following conditions:

1. These applicants are eligible for admission as non-degree seeking students.
2. Class load for these students in their first full term must not exceed 12 semester hours.
3. College counselors must place these students initially in those courses best designed to improve basic skills.
4. Students admitted under this policy must complete requirements for a regular high school diploma or an equivalency diploma during their second term of enrollment if they wish to take courses other than those classified as occupational.
5. Students admitted under this policy must earn a regular high school diploma or an equivalency diploma prior to earning the AA or AS degree at Lake-Sumter Community College.

Non-high school graduates age 18 and younger, legally out of school, may enroll as audit students only.

Transient Student. You are seeking a degree at another institution and desire to take a course at Lake-Sumter Community College for transfer of credit there; you are not required to submit a transcript of your other college records but you must have permission of your "home" college or university.

Dual Enrollment Program. Lake-Sumter Community College provides a Dual Enrollment Program to allow high school students to enrich their academic backgrounds. Inquiries concerning the Dual Enrollment Program should be addressed to the Associate Dean of Students/Admissions.

High school students who receive special permission from their principal, counselor and parents may be admitted to the Dual Enrollment Program.

College credit will be awarded when earned. Plans to seek admission to the Dual Enrollment Program must be initiated with the high school officials.

Early Admission Students. Lake-Sumter Community College, in order to provide greater flexibility and opportunity for superior high school students, will accept students into the Early Admission Program. The following conditions will prevail:

1. Completion of 11th grade.
2. Academic average of "B" (3.0) or better on all work attempted in high school.
3. Applicants will first be screened by a high school counselor who will recommend students on the basis of academic achievement, emotional stability, and maturity.
4. After the high school has screened the applicants, the names of those students who are recommended should be sent to the Office of Admissions together with (a) a high school transcript; (b) a letter of recommendation signed by both the principal and counselor; (c) letters of recommendation from two teachers; and (d) written parental approval and commitment to the program.
5. The student should submit a formal application of the Office of Admissions.

Advanced Placement/College Board. College Entrance Examination Board Program - It is the policy of Lake-Sumter Community College to grant college credit to a student who presents a score of 5, 4, or 3 on one or more of the Advanced Placement Program examinations administered by the College Entrance Examination Board (CEEB). To be eligible for credit, the examination must be taken prior to enrolling in college. Credit thus granted by Lake-Sumter Community College is transferable to Florida institutions of higher education participating in a statewide Advanced Placement program. The student must apply to the college before credit will be awarded in this program.

Audit Students. Students may enroll in college for "audit" status if they do not wish to receive college credit. Audit students must register during the regularly scheduled registration period and indicate on the registration form that they plan to audit the class.

1. As an audit student you must meet the admission requirements of the college.
2. Your fees and tuition are the same as for credit.
3. You must be regular in attendance in your class and make regular class preparation. You may participate in all class activities but you will not be required to take examinations and will be given neither grades nor credit.

4. Once the late registration period has ended, you may not change from audit status to credit status.

International Students. Lake-Sumter welcomes international students. The College is authorized under Federal law to enroll non-immigrant alien students. The following requirements must be met by students seeking admission on the F-1 Visa.

1. Complete application for admission.
2. Achieve TOEFL score of at least 550 and have it sent directly from a TOEFL testing center.
3. Secure an official translation of an original copy of high school (secondary school) transcript.
4. Submit a financial statement verifying at least six to eight thousand dollars, per year, to cover living expenses, tuition, etc.
5. Obtain an official translation of transcripts from other colleges attended, if any.
6. International students pay non-Florida student fees.
7. In addition to the application for admission fee, a one time \$20 processing fee is required. These fees are non-refundable.

ROTC. Students at Lake-Sumter Community College are eligible to apply for the United States Air Force ROTC Program at the University of Central Florida, Orlando. A maximum of four (4) semester hours of ROTC credit may be applied as elective credit toward a degree at Lake-Sumter. Further information is available at the ROTC office at UCF.

CLASSIFICATION OF STUDENTS

Full-time. You are a full-time student if enrolled for twelve (12) or more semester hours credit in Fall, Spring, or Summer C Terms, and 6 or more semester credit hours in Summer A or Summer B Terms.

Part-time. You are a part-time student if enrolled for less than twelve (12) semester hours credit in Fall, Spring, or Summer C Terms, or less than six (6) semester hours credit in Summer A or Summer B Terms.

Freshman. You are classified as a Freshman if you have completed less than twenty-eight semester hours credit of college work.

Sophomore. You are classified as a Sophomore if you have completed at least twenty-eight semester hours credit of college work.

ADMISSION PROCESS

Submit the following to the Office of Admissions:

1. Application for admission and application fee (Non-refundable).
2. High school transcript showing final grades and date of graduation; or high school equivalency diploma; or an official college transcript from each institution attended. NOTE: It shall be the responsibility of the applicant to supply transcript(s) to the admissions office.
3. Health Statement. (Part of application.)
4. Affidavit of residence. (Part of application.)
5. Take the placement examination on a scheduled date. (See Placement Testing Policy.)

The student will be sent a tentative acceptance when his application is received by the Office of Admissions. Upon receipt of all items mentioned above, the student will be considered for final acceptance by the Office of Admissions.

RESIDENCY REQUIREMENTS

Florida Resident. For the purpose of assessing tuition, applicants are classified as Florida or non-Florida students. In applying this regulation, "applicant" shall mean a student applying for admission to Lake-Sumter Community College if the student is at least 18 years of age or married. If the student is a minor and unmarried, it shall mean the parents, parent, or legal guardian of the student. Such applicant will pay the non-Florida tuition and other charges required of non-Florida students, unless he is a citizen of the United States or Resident Alien and *shall have physically resided and has his habitation, with the intent to establish domicile, home and permanent abode in the State of Florida for at least 12 consecutive months (after reaching the age of majority, 18 years) immediately preceding the first day of classes.*

You may be denied college credits for work done at Lake-Sumter Community College if it is determined you have made false or fraudulent statements concerning your legal residence or your intentions as to legal residence in connection with, or supplemental to, your application for admission.

Non-Florida Residents. Non-Florida residents are those who do not qualify as Florida residents. college fees and tuition assessments are based on your legal residence or that of your parents or legal guardian, if you are under eighteen (18) years of age.

Reclassification as a Florida Resident. A non-Florida resident may apply for reclassification of residency prior to any subsequent registration under the following provision.

1. To qualify for reclassification as a Florida resident, a person (or if a minor, his parents or legal guardian) shall have resided in Florida twelve (12) consecutive months.
2. Evidence of a Declaration of Domicile filed with the Clerk of the Circuit Court, Lake County Courthouse, must be presented by the student to the Office of Admissions.
3. An alien shall have resided in Florida for twelve (12) consecutive months and must present U.S. Immigration and Naturalization certification that the student is a resident alien or U.S. citizen. The resident alien number must be presented to the Office of Admissions.

ADMISSION REQUIREMENTS TO THE NURSING PROGRAM

Admission to the Nursing Program is limited by the size of clinical facilities and numbers of faculty.

1. High school graduation or G.E.D. is required.
2. Students must complete application for admission to Lake-Sumter Community College.
3. All degree-seeking students who enter Lake-Sumter Community College for the first time must take the English/Reading/Math Placement Tests. Prospective nursing students must score 14 or above on the Math Placement exam, 43 or above on the Language Usage Exam, and 25 or above on the Advanced Language Usage Exam. Students not meeting this requirement will be required to take remedial courses before entering the Nursing Program. Contact the Counseling Center for test dates.
4. Two letters of recommendation from current employers or teachers must accompany the application.
5. Acceptance into the nursing program is conditional and pending satisfactory results of the physical examination. Evidence of good physical and mental health must be documented through a physical examination, as part of the application process.
6. Students selected for admission will have completed the required prerequisite courses.

Required Prerequisite Courses

General Nursing Track:

APB 2203C	Anatomy & Physiology I	5 credits
ENC 1101	or 1132 College Composition I	3 credits
PSY 2012	Introduction to Psychology	<u>3 credits</u>
	Total	11 credits

LPN Transition Track:

APB 2203C	Anatomy & Physiology I	5 credits
APB 2204C	Anatomy & Physiology II	5 credits
MCB 2010C	Microbiology	5 credits
ENC 1101	or 1132 College Composition I	3 credits
PSY 2012	Introduction to Psychology	3 credits
DEP 2004	Psychology of Human Development	3 credits
HUN 1201	Nutrition	<u>3 credits</u>
		27 credits

7. Credit for the prerequisite science courses must have been earned within 7 years of the date of admission to the program.
8. A Grade of "C" in all science courses with an overall GPA of 2.5 is the *minimal* acceptable standard for application to the program.
9. Application must be made yearly to the Nursing Program. Acceptance into Lake-Sumter Community College while taking the prerequisite general education courses does not constitute admission to the Nursing Program.
10. Students applying for the LPN Transition track must be Licensed Practical Nurses in the State of Florida or expect to complete an approved LPN Program by April of the admission year.* Licensed Practical Nurses must also score within the 50 percentile or above on NLN Achievement Tests for Licensed Practical Nurses. These scores must be submitted at the time of application to the program and be no more than 2 years old. Contact the Counseling Office for testing dates.
11. The deadlines for Program Applications are:

LPN Transition Track: Pick up application January 15th and complete by March 15th. Students will be notified by April 15th if they are accepted for admission in May.

General Nursing Track: Pick up applications by February 15, complete by April 15th. Students will be notified by May 15th if they are accepted for admission in August.

*Students who do not pass the first licensure examination for which they are eligible will be able to complete the nursing courses in which they are concurrently enrolled. However, they will not be eligible for subsequent ADN level coursework until successful completion of the LPN licensure exam.

REGISTRATION PROCEDURE

1. Complete all Admission Requirements.
2. Day and Evening registration hours are available for the student's convenience. A registration schedule of dates and hours is printed in the schedule of classes for each term.
3. A student whose attendance at the college is interrupted by more than one regular term must apply for readmission and will be subject to the rules and regulations that are in effect at the time of readmission.
4. Tuition and fees are due the day of registration.
5. The College Admissions Committee may review applications and has the authority to grant or refuse admission to the college based on factors other than race, religion, sex, disability, age, national origin, or marital status.

STUDENT RECORDS

In order that the college will be in compliance with P. L. 93-380 (Family Education and Privacy Act), commonly called the Buckley Amendment, and State Board of Education Regulations (6A-14.51) the following information is being provided you through this medium.

1. **Directory Information**

The following items are classified by law as directory information.

- A. Student's name
- B. Address
- C. Telephone listing
- D. Date and place of birth
- E. Major field of study
- F. Participation in officially recognized activities and sports
- G. Weight and height of members of athletic teams
- H. Dates of attendance
- I. Degrees and awards received and most recent previous educational institution attended by the student.

Although Lake-Sumter Community College does not publish a directory, the above designated information will be released with discretion unless the student specifies in writing to the Office of Admissions that this information is to be withheld. If a student wishes directory information withheld, the notification must be given to the Office of Admissions not later than the 10th calendar day from the first day of classes in each term.

2. **Guidelines concerning "parent"**

In order for parent(s) to have access to a student's records, without written permission from the student, the parents must certify that the student is

economically dependent upon the parent(s) as defined by Section 152 of the Internal Revenue Code of 1954. Thus, it would be necessary for the parent to give proof of dependency to the custodian of records by showing a copy of the parent's current income tax report or other acceptable report for verification of claimed dependency.

3. Student Rights

Whenever a student has attained eighteen years of age, or is attending an institution of post secondary education, the permission of consent required of and the rights accorded to the parents of the student shall thereafter only be required of and accorded to the student.

4. Notification by Educational Institutions

This is to officially notify students that the president of Lake-Sumter Community College has designated the Associate Dean of Students/Admissions as custodian of records. His duties will include supervising compliance with the act and state regulations. The Associate Dean's office is located in the college Multipurpose Building.

5. Procedure for Granting Access

Students who desire access to all items in their permanent folder that may be shown them, should make such a request in writing to the Associate Dean of Students/Admissions. The Associate Dean must reply within 30 days after receipt of request.

6. Challenges to the Content of Records

A. Right to a Hearing

Upon written request, the custodian of records shall accord the student the opportunity to challenge his educational record. The student shall also be accorded the opportunity to include explanatory information in his or her record. A student may challenge a grade only on the ground that it was inaccurately recorded, not that it was lower than the instructor ought to have awarded.

B. Formal Proceedings

The following procedure should be followed in a formal appeal. The president shall appoint a committee of two faculty members and one student, in the case of formal hearings, to settle disputes between students and the institution over student records. If the student wishes a formal hearing, he or she shall make the request in writing to the president. The president shall reply to the appeal request within a period of 15 calendar days after receipt of the request. In each instance the college shall make every effort to guarantee the student due process. All procedures shall be documented by the college.

7. Content of Consent

The college has developed a form for obtaining the student's consent to release his records.

8. **Fee for Copy of Record**

Students who desire copies made of portions of their record will be charged the actual cost of reproduction. No charge shall be made for retrieval of records.

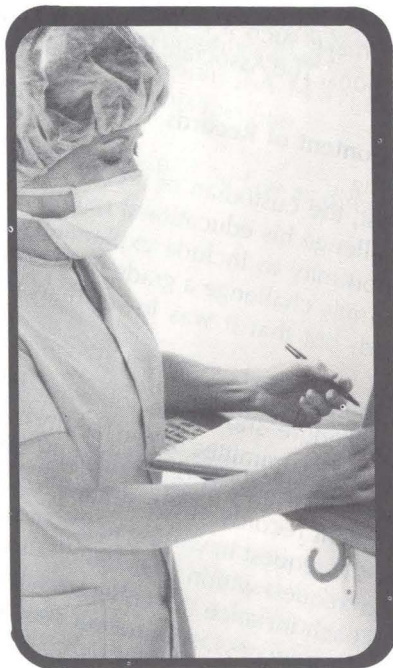
9. **Additional Information**

Any student desiring complete information as it relates to student access and student protection of records should contact the Associate Dean of Students/Admissions.

NOTE: Only the student can request that his or her transcript be sent to another person or institution. Transcripts must be ordered in person or in writing. Phone calls are not honored.

date _____

subject _____



ACADEMIC INFORMATION

FINAL GRADES

Final grades are distributed following the close of the term. The following grade system is used.

		quality points per credit hour
A	Excellent	4
B	Good	3
C	Average	2
D	Poor	1
F	Failure	0
W	Withdrew	
S	Satisfactory	
X	Audit	
I	Incomplete	
N	No Credit	
NC	No Credit Course	

Academic Average. A student's quality points must be at least double the number of semester hours of credit pursued for an associate degree. A student must maintain a scholastic average of "C" or better in order to graduate.

Courses from which a student withdraws with a "W" are not considered in any way in determining point averages. If a student receives a grade of "F", the hours of the course are not calculated in the grade point average, provided the student repeats the course and earns a higher grade.

A student's average will include grades on all work attempted at all institutions.

Repeated Courses. When a course is repeated, only the most recent grade earned shall be used in determining the student's average. Credit cannot be received in both courses.

Students are not permitted to repeat a course in which they attained a "C" or better except on an audit basis.

Incomplete Course. A student who is earning passing grades in a course but has not completed the required assignments by the end of the term may be assigned a grade of "I" provided the student's absence was caused by illness or similar reasons. An "I" must be removed by the dates indicated on the calendar. If the instructor has not changed the grade by the date

specified on the college calendar, the Office of Admissions is automatically required to record an "F" for the course.

An incomplete may be removed even though the student is not enrolled in the college. "I" grades are not computed in the student's grade point average until the final grade has been determined.

The President's List. Superior academic achievement merits inclusion on the President's List.

Any full-time student who has accrued a minimum of 12 semester hours of credit at Lake-Sumter Community College is eligible by earning a 3.80 or higher grade point average with no failures and no incompletes during a term. An indication of this achievement will be placed on each student's permanent record.

Part-time students will be accorded honors based upon earning 12 semester hours of credit at Lake-Sumter Community College with a grade point average of 3.80 or higher with no failures and no incompletes among the 12 semester hours earned. Honors may be accorded for each subsequent 12 semester hours of credit using the guidelines above.

The Dean's List. Outstanding academic achievement merits inclusion on the Dean's List.

Any full-time student who has accrued a minimum of 12 semester hours of credit at Lake-Sumter Community College is eligible by earning a 3.40-3.79 grade point average with no failures and no incompletes during a term. An indication of this achievement will be placed on each student's permanent record.

Part-time students will be accorded honors based upon earning 12 semester hours of credit at Lake-Sumter Community college with a grade point average of 3.40-3.79 and no failures and no incompletes among the 12 semester hours earned. Honors may be accorded for each subsequent 12 semester hours of credit using the guidelines above.

DEGREES AND PROGRAMS

How to Choose Your Program. One of the basic questions that must be answered by the community college student is: "How many years do I plan to attend college?" Many students plan to stay at Lake-Sumter Community College for two years and then transfer to another college or university for two more years. If this is your plan, you should enroll in a transfer program, which leads to an Associate in Arts degree at Lake-Sumter Community College. Read carefully the information in the Associate in Arts Degree section.

Career Programs. Some students are interested in preparing for a career that requires study beyond high school but does not require a four-year degree. Lake-Sumter Community college offers specialized courses that prepare the student for employment after two years of college. Such programs lead to the Associate in Science degree. If this is your plan, read the Associate in Science Degree section.

Certificate Programs. "Do I have to pursue a degree?" The answer is "NO." For the students who are interested in shortening the time spent in college, Lake-Sumter Community college offers Certificates in recognition of completed specified courses within the areas of Real Estate, Criminal Justice, Commercial Art and others. If you are interested in a certificate, read the Certificate Programs section of this catalog.

COMMUNITY SERVICES

The Office of Community Services is responsible for all non-credit courses and the administration of the South Lake Center.

Non-Credit Courses: A variety of non-credit courses open to the general public are offered throughout the year by the Office of Community Services. Courses are held on campus and at many convenient locations throughout Lake and Sumter counties. Courses are offered not only at night but also during the weekdays and even on Saturdays.

Non-credit courses are divided into three categories: (1) recreational, leisure and self-enrichment courses (2) supplemental vocational (3) community instructional services courses.

(1) *Recreational, Leisure and Self-enrichment Courses.* These courses are self-supporting through student fees. Courses vary in length and cost, with the typical course running six to eight weeks and costing \$12 to \$16.

(2) *Supplemental Vocational Courses.* Supplemental vocational courses such as real-estate renewal programs, are partially supported by public funds and therefore are often offered at even lower rates than the self-supporting courses. An additional out-of-state tuition fee is charged for non-Florida residents.

(3) *Community Instructional Services Courses.* A special state grant provides for certain courses which address specific community problems in the following seven areas: health, safety, environment, human relations, government, child rearing and consumer education. These courses are free and some are designed specifically for senior citizens.

Registrations for all non-credit courses are accepted on a first-come, first-served basis prior to the second session of each class. Mail-in and walk-in

registrations are accepted. No confirmations are sent for mail-in registrations. Full refunds are issued if the Office of Community Services is notified of the refund request prior to the second class session. No refunds are issued after this date.

South Lake Center. In addition to offering classes in many part-time locations off-campus, Lake-Sumter Community college operates an off-campus facility. The South Lake Center is located at 664 Montrose Street in Clermont. A variety of credit and non-credit courses are offered here each term, bringing quality education close to home. For more information, contact the Office of Admissions for credit courses and the Office of Community Services for non-credit courses.

PROFESSIONAL PROGRAMS

Professionals in the field of real estate and nursing are offered continuing education courses at the college which will permit them to meet their licensing requirements with the State of Florida.

COOPERATIVE EDUCATION

The term "cooperative" is used as the title of this program because Cooperative Education is based on the idea that learning takes place in many different settings — both in and outside the classroom. The purpose is to create a total learning experience through which students will gain not only specific skills and a broad range of knowledge, but also a sense of professional, financial, and personal responsibility, and to provide better trained, more mature individuals to enter the world of work in their chosen careers. Cooperative Education at Lake-Sumter Community College integrates organized and supervised employment experiences with regular classroom study.

College credit may be earned for work experience if the students' jobs are related to their field of study or vocational goal. Appropriate learning objectives will be identified and approved for evaluation. Transfer students may continue their Cooperative Education at colleges and universities.

Flexibility is built into the program by offering various work experience options and related classroom seminars. Each part-time training assignment earns three (3) semester hours of academic credit per term. Co-op students must maintain a 2.00 grade point average (C) or better to continue in the program.

Prerequisites: A student must have completed a minimum of 12 semester hours at Lake-Sumter Community College or an approved institution, with a 2.00 grade point average (C) or higher. In addition, the student must have

the approval of the Associate Dean, the Instructor/Coordinator, and, before registering, a job which is approved for Co-op.

Job Assistance: The job placement office maintains a file of current job openings appropriate for Co-op experiences. Students will be assisted in finding the appropriate job based on their career goals.

The student's grade is based on the Instructor/Coordinator's evaluation of the student. This evaluation may include measurement of the student's progress and productivity, the quality of student reports, student performance measured by the objectives stated in the learning contract, the extent of the on-the-job training assignment, employer evaluations, and attendance and participation in Cooperative Education seminars.

Further information may be obtained by contacting the Cooperative Education Coordinator, located in the Multipurpose Building.

OTHER PROGRAMS

Many persons may wish to get more out of life through the attainment of further education but have no desire for formal recognition of their academic efforts. Such students may design their own individual program and may enroll in either credit or non-credit day or evening courses.

COLLEGE LEVEL ACADEMIC SKILLS TEST

The Lake-Sumter curriculum includes the communication and computation skills students are expected to achieve before leaving college. The College Level Academic Skills Test (CLAST), which tests these skills, is the result of state legislation designed to improve the quality of college education in Florida.

Standards for admission to upper division programs will apply equally and uniformly to community college students, transfer students, and university students. Scores on CLAST, which must be attained to receive the Associate in Arts degree and to enter the upper division (junior year) of a state university of Florida, have been set as follows:

	Aug 1, 1986 July 31, 1989	Aug 1, 1989 and beyond
Computation	275	295
Reading	270	295
Writing	270	295
Essay	4	5

It should be noted that failure to achieve these scores does not end students' chances for continuing their education. It merely means that further work in the deficient area(s) will be required to improve scores on a subsequent test.

The following skills are tested by CLAST:

Reading Skills

- Recognizing main ideas
- Identifying supporting details
- Determining meaning of words
- Recognizing author's purpose
- Identifying author's overall organizational pattern
- Distinguishing between fact and opinion
- Detecting bias
- Recognizing author's tone
- Recognizing relationships within and between sentences
- Recognizing valid arguments
- Drawing inferences and conclusions

Writing Skills

- Determining the purpose for writing
- Limiting the subject to the requirements of time, purpose, and audience
- Formulating a thesis or main idea statement
- Providing adequate and relevant supporting details
- Arranging ideas in a logical organizational pattern with effective transition between parts
- Using words which convey the meaning required by context
- Avoiding inappropriate use of slang, jargon, cliches, pretentious expressions, and wordiness
- Placing modifiers correctly
- Coordinating and subordinating sentence elements
- Using parallel expressions for parallel ideas
- Avoiding fragments, comma splices, and fused sentences
- Using a variety of sentence patterns
- Avoiding unnecessary use of passive construction
- Avoiding awkward constructions
- Using standard verb forms
- Maintaining agreement between subject and verb, pronoun and antecedent
- Using proper case forms
- Using standard spelling, punctuation, and capitalization
- Using adjectives and adverbs correctly

- Maintaining a consistent point of view

Computation Skills

Arithmetic Skills

- Adding, subtracting, multiplying, and dividing rational numbers in decimal and fractional forms
- Calculating percent increase and percent decrease
- Recognizing the meaning of exponents
- Recognizing the role of the base number in numerical systems
- Identifying equivalent forms of decimals, percents, and fractions
- Determining the order relation between magnitudes
- Identifying a reasonable estimate of a sum, average, or product
- Inferring relations between numbers in general by examining number pairs
- Selecting applicable properties for performing arithmetic calculations
- Solving real-world problems which do not require the use of variables
- Solving problems that involve the structure and logic of arithmetic

Geometry and Measurement Skills

- Rounding measurements
- Calculating distances, areas, and volumes
- Recognizing horizontal, vertical, parallel, perpendicular, and intersecting lines
- Identifying relationships between angle measures
- Classifying simple plane figures by recognizing their properties
- Recognizing similar triangles and their properties
- Identifying types of measurement (linear, square, cubic) for geometric objects
- Inferring formulas for measuring geometric figures
- Selecting applicable formulas for computing measures of geometric figures
- Solving real-world problems involving perimeters, areas, and volumes of geometric figures
- Solving real-world problems involving the Pythagorean property

Algebra Skills

- Adding, subtracting, multiplying and dividing real numbers
- Applying the order-of-operations agreement
- Using scientific notation

- Solving linear equations and inequalities
- Using formulas to compute results
- Finding particular values of a function
- Factoring a quadratic expression and finding the roots of a quadratic equation
- Recognizing and using the properties of addition and multiplication
- Determining whether a number is among the solutions of a given equation or inequality
- Recognizing statements and conditions of proportionality and variation
- Identifying regions of the coordinate plane which correspond to specific conditions
- Inferring relations among variables
- Selecting applicable properties for solving equations and inequalities
- Solving real-world problems inviting the use of variables
- Solving problems that involve the structure and logic of algebra

Statistics Skills, Including Probability

- Identifying information contained in graphs
- Determining the mean, median, and mode
- Counting subsets of a given set
- Selecting the sample space associated with an experiment
- Recognizing properties and interrelationships among the mean, median, and mode
- Recognizing the properties of the normal curve
- Recognizing samples that are representative of a given population
- Choosing the most appropriate procedures for selecting an unbiased sample
- Identifying the probability of a specified outcome
- Inferring relations and making accurate predictions from study in particular cases
- Solving real-world problems involving the normal curve
- Solving real-world problems involving probabilities

Logical Reasoning and Computer Technology Skills

- Deducing facts of set inclusion or set non-inclusion from a diagram
- Identifying the negations of simple and compound statements

- Determining equivalence and nonequivalence of statements
- Drawing logical conclusions from data
- Recognizing invalid arguments with true conclusions
- Distinguishing between fallacious and non-fallacious arguments
- Inferring valid reasoning patterns and expressing them with variables
- Selecting applicable rules for transforming statements without affecting their meaning
- Drawing logical conclusions when facts warrant them
- Identifying characteristics of tasks which computers perform well
- Identifying human functions necessary to use computers
- Identifying possible abuses of computer use

The unedited definitions of the Skills listed above are contained in State Board of Education Rule 6A-10.31, Florida Administrative Code.

RULE 6A-10.30 (GORDON RULE)

Effective January 1983, the "Gordon Rule" is a statewide regulation which requires Associate in Arts degree recipients to have completed at least 12 semester hours of credit in composition (each course to require a minimum of 6000 words of composition) and 6 semester hours of credit in algebra at the college level or higher. This applies to all students entering college for the first time. Courses which will minimally fulfill these requirements are as follows:

Composition

ENC 1101 or 1132
 ENC 1102
 ENC 1135
 ENC elective (CRW 2020, ENC 2210,
 MMC 2100, INR 2002, AMH 2010,
 AMH 2020)

Computation

MAT 1033 and MGF 2202 or MAC 1104
 or
 MAC 1104 and MAC 1114
 or
 MAC 1132 and
 MGF 2113

Any course which is covered by the State Board rule (English and mathematics) can be counted toward graduation only if a "C or better" is the grade in the course.

COLLEGE LEVEL EXAMINATION PROGRAM

Lake-Sumter Community College participates in the College Level Examination Program (CLEP) conducted by the College Entrance Examination Board. This program is primarily designed to enable those who have reached the college level of education through such non-traditional ways as correspondence study, independent study, and on-the-job experience to earn college credit by examination.

Students currently enrolled at Lake-Sumter Community College and applicants for admission are eligible to apply for participation in CLEP.

Students may earn a maximum of 39 semester hours of credit through CLEP. Lake-Sumter Community College will award credit to those who achieve the following scores, or higher, on the subject matter examinations listed below with no letter grades or quality points assigned.

Examination & Course Equivalent	Minimum Score for awarding credit	Credit hours awarded
American Government, POS 2041	50	3
American History I, AMH 2010	49	3
American History II, AMH 2020	49	3
American Literature, AML 2010-2022	50	6
Biology, APB 1150	49	3
College Algebra, MAT 1033	48	3
English Literature, ENL 2012-2022	49	6
General Psychology, PSY 2012	50	3
Introduction to Accounting, ACG 2001-2011	50	7
Introduction to Sociology, SYG 2000 & Elective	50	6
Western Civilization I, EUH 1000	50	3
Western Civilization II, EUH 1001	48	3

No students will be permitted to take an examination for credit in a course in which they have already received credit. When courses come in blocks of 6 semester hours, students will not be permitted to earn three hours through CLEP. Students will not be permitted to take CLEP exams in courses for which they are currently enrolled, and will not be permitted to use CLEP for repeated courses.

NOTE: CLEP credits will not be awarded at Lake-Sumter Community College until the student has actually enrolled in Lake-Sumter Community College.

COURSE WAIVERS

Recognizing that students come to L-SCC with various levels of achievement and skill, Lake-Sumter allows students to take departmental exams. Where proficiency is demonstrated, certain courses may be waived* to allow the student to enroll in classes at the next level or other elective classes. No credit is given, but the student is then free to take an elective in place of the required credits.

COURSE IN A.S. DEGREE PROGRAMS

ACG 2001	Principles of Accounting I
OST 1100C	Typewriting I
OST 1110C	Typewriting II
OST 1211C	Shorthand I
OST 1212C	Shorthand II
OST 2213C	Shorthand III
CGS 1461C	Computer Programming - Basic
MTB 1321	Technical Math I

Examinations in other subjects may be permitted if approved by the Associate Dean and the Office of Admissions.

*Only ONE of these courses may be exempted.

AIB TRANSFER CREDIT

Lake-Sumter Community College accepts up to fifteen (15) credits hours of approved banking courses on a certified American Institute of Banking transcript with grades of C or above. Banking courses with grades lower than C must be taken again at L-SCC.

Banking students will be permitted to earn credits by examination in banking courses for which an exemption examination is on file at L-SCC. A grade of S will be awarded, but no quality points will be assigned. Students must register and pay tuition for each examination passed. Approval of the Associate Dean of Students/Admissions must be obtained prior to the testing date listed for each term. The Office of Admissions should be contacted for additional information.

CORRESPONDENCE COURSES

A maximum of 6 semester hours of correspondence credit may be accepted provided:

1. The course was administered by a regionally accredited institution.
2. The minimum grade earned is at least the equivalent of a "C" at Lake-Sumter Community College.
3. The credit is acceptable by the institution conducting the correspondence course toward one of its own degree.

4. None of the final 15 semester hours before graduation may be acquired through correspondence unless the student is unable to obtain the course or courses at Lake-Sumter Community College.

Lake-Sumter Community College does not offer correspondence courses.

DIRECTED STUDIES

Under unusual circumstances a student may be permitted to enroll in a one hour course in directed studies. Contact the Office of Admissions for additional information.

NON-TRADITIONAL CREDIT

Any student who expects to earn credit in a non-traditional way which is not covered in the college catalog must have his request for credit approved by the Associate Dean of Students/Admissions before enrolling in the course or program.

CONTINUING EDUCATION UNIT (CEU)

Lake-Sumter Community College offers the Continuing Education Unit (CEU) for approved non-credit continuing education programs. Programs approved for CEU awards must meet criteria set by the Southern Association of Colleges and Schools. One CEU is awarded for each 10 hours of instruction and is the nationally recognized standard unit of measure that can be earned by participants in qualified programs of continuing education. Verification of CEU awards is available through the Records Office upon request by the student.

AUDITING COURSES

Anyone who wishes to attend a class, but who does not wish to receive credit, may register as an audit student. Neither grades nor college credit will awarded. Eligible students who have registered as audit students may change to credit during the first week of classes. (See specific dates for those changes in the College Calendar section of this catalog.)

Students who desire to change from credit to audit may do so by securing the change form from the instructor and then filing the form with the Office of Admissions prior to the end of the "W" period which is listed in the College Calendar section of this catalog for each term.

EXAMINATIONS AND TESTS

Instructors may give tests and quizzes, oral and written, at their own discretion. Regularly scheduled examinations will be given at the end of each term. Special examinations or re-examinations will be given only with the approval of the instructor, Associate Dean and the Dean of Instruction.

CLASS ATTENDANCE

Punctual and regular attendance is encouraged in all courses and course activities. Any class session missed reduces the opportunity for learning and may have an adverse effect on the grade earned in the course. Instructors will establish and announce their class attendance policies at the beginning of each term.

COURSE LOAD

Lake-Sumter Community College operates on a year-round plan and courses are designated in terms of semester hours of credit. Normally, a three-semester hour course meets for three hours a week. However, certain courses which require laboratory work or skill practice may meet for more hours per week than the number of semester hours credit they carry.

Average and maximum course loads are as follows:

	Average	Maximum
Fall Term	16 semester hrs.	19 semester hrs.
Spring Term	16 semester hrs.	19 semester hrs.
Summer Term A	6 semester hrs.	9 semester hrs.
Summer Term B	6 semester hrs.	9 semester hrs.
Summer Term C	6 semester hrs.	12 semester hrs.

A semester hour load of 12 credit hours is the minimum required for full-time status for the Fall and Spring Terms and Summer Terms A, B, C, combined. A student enrolling for more than 17 semester hours in the Fall and Spring Terms or for more than 7 semester hours in the Summer Term A and B, must have a "B" average, the recommendation of his counselor, and the approval of the Dean of Instruction.

STUDENT/INSTRUCTOR MISUNDERSTANDING

Should a misunderstanding or a problem arise between a student and a instructor, the student should contact the instructor for the purpose of resolving the difficulty. If the problem persists, the student should get in touch with the Associate Dean. Should the issue remain, the student should confer with the Dean of Instruction.

SCHEDULE CHANGES/ADD-DROP

Necessary changes in class schedules may be made during a brief period at the beginning of each term as listed in the College Calendar. After the designated deadline, only class withdrawals or changes to audit will be permitted without refund.

WITHDRAWAL PROCEDURE

The college encourages each student to make every effort to complete the full term. Students who feel they must withdraw will be permitted to do so with a grade of "W" (without penalty) until the date listed in the college catalog for each term. See college calendar.

During the withdrawal period, instructors may withdraw a student with a grade of "W" for non-attendance. However, it should be noted that instructors are not required to withdraw students for non-attendance. For those withdrawn by an instructor, the "W" grade for non-attendance will not be recorded for a period of seven days, thereby permitting the student to contact the Associate Dean of Students/Admissions. No withdrawal will be permitted after the designated date in each term unless extenuating circumstances are to be considered by the instructor and the Associate Dean of Students/Admissions. Withdrawal forms may be secured from any instructor and must be turned in to the Admissions Office by the student. Students may also withdraw from a class by writing to the Admissions Office. The letter must include the name of the course, the reason for the request, and the student's signature authorizing the withdrawal. Responsibility for withdrawal rests squarely on the student.

In one-credit courses a grade of "W" (without penalty) will be issued only if the student withdraws prior to the last class session.

HEALTH AND PHYSICAL EDUCATION

Physical education activity courses are designed to develop basic performance skills, techniques, knowledge and appreciation of the values of the activities listed as course offering.

No duplication of activity is permitted unless approved. No more than four hours of cumulative credit in Health and Physical Education may be applied toward the 64 hours required for graduation.

Where there are beginning and intermediate courses offered in the same activity, the student must satisfactorily complete the beginning course before enrolling in the intermediate course, or he must receive consent of the instructor.

GRADUATION REQUIREMENTS

The following requirements must be met by students planning to graduate from Lake-Sumter Community College.

1. Complete the requirements in general education as outlined in the catalog *except in certain occupational and preprofessional programs*.
2. Complete at least 64 semester hours of credit in a prescribed program except for specialized programs for which a higher number of credits is required.
3. Complete the last 12 semester hours at Lake-Sumter Community College. Any exception to this requirement must be approved by the president or his designee.
4. Earn a 2.0 overall average as well as a 2.0 average at Lake-Sumter Community College. Only the last grade in a repeated course is used in grade point average computation. Upon application for a degree, institutional credit will be deleted from the final grade point average.
5. Take the College Level Academic Skills Test and achieve minimum or higher scores.
6. File an application for graduation with the Associate Dean of Students/Admissions prior to the deadline published in the catalog. The applicant must meet the program requirements as outlined in the catalog under which he enrolls or the catalog currently in use at the time of graduation. A student whose attendance at the college is interrupted by more than one regular term must meet the requirements of the catalog under which he re-enters or the catalog in use at the time of graduation.
7. Satisfy all financial obligations to the College.

GRADUATION WITH HONORS

Students who have completed a minimum of twenty-four semester hours at Lake-Sumter Community College are eligible for graduation honors.

The appropriate honors are recorded on the student's diploma. The honors based on scholastic achievement are as follows:

Grade Point Average	Honor
3.40-3.59	Cum Laude (with honor)
3.60-3.79	Magna Cum Laude (with high honor)
3.80-4.00	Summa Cum Laude (with highest honor)

GRADE POINT AVERAGE (GPA)

Grade point average (GPA) is determined by dividing total quality points earned by total academic credit hours attempted — not just those earned. Academic honors for graduation are determined by computing courses taken at all institutions (all college GPA) attended by the student. Only the last attempt of a repeated course counts in computing grade point average. A minimum 2.0 ("C") average is required for graduation. Quality points are calculated as follows:

Grade	Rating	Quality Points (per credit hour)
A	Excellent	4
B	Good	3
C	Average	2
D	Passing Below Average	1
F	Failure	0
I	Incomplete	0
W	Withdrawn or Dropped	0
X	Audit	0
N	No Grade or Non-Credit	0
S	Satisfactory	0
Z	CLEP Credit	0

An incomplete may be assigned to students who are progressing satisfactorily and who, for valid reasons (i.e. emergencies such as serious illness or death of a family member), could not complete the work of a course within the semester. The "I" becomes an "F" unless the grade is changed by the instructor within the agreed time period for completion in the ensuing session.

As an example, if you signed up as a full-time student in a regular semester, as in Fall Term, with six (6) representative courses identified here by prefix and number with the credit hours and grades indicated, your grade point would be thirty (30) quality points divided by fifteen (15) academic hours attempted or exactly 2.0 ("C").

Course Number	Semester Hours Attempted	Earned Grade	Hours Completed	Hours Passed	Quality Points
ENC 1101	3	A	3	3	12
POS 2041	3	B	3	3	9
CHM 1020C	3	C	3	3	6
CGS 1000C	3	D	3	3	3
MAT 1033	3	F	3	0	0
HUM 1020	3	W	0	0	0
	<hr/> 18		<hr/> 15	<hr/> 12	<hr/> 30

FINANCIAL INFORMATION

GENERAL INFORMATION

Every effort has been made in this catalog to reflect all fees for each course. However, in the course of preparing the schedules and registrations, some fees may be inadvertently omitted. If this should occur, the student will be notified that an additional fee is due and must be satisfied within the allotted time. If the student has not satisfied all fees due the college, he or she will not be permitted to register for future courses at Lake-Sumter Community College. In addition, any request for a transcript of the student's college record will be refused.

1. All fees are payable at the time of registration.
2. Students are expected to pay all financial obligations to the college promptly. A transcript will not be issued nor will the student with any financial obligations be permitted to register for subsequent courses. The student is subject to suspension for delinquent obligations.
3. Audit — Fees are the same whether enrolled for credit or audit.
4. Non-credit Courses — Fees for special courses, seminars, institutes or workshops will be assessed based on the estimated cost of each course.
5. Applied music fees for private instruction are paid by the student in addition to regular tuition.

CREDIT CARD PAYMENT

The college will accept Mastercard/Visa for the payment of fees.

APPLICATION FEE

A check, cash or money order in the amount of \$15 must accompany all applications for admission to the college. This fee is neither refundable nor transferable. It is a one-time fee and covers all subsequent enrollments. This applies to all credit and/or audit students, whether full-time, part-time, day or evening.

STUDENT FEES*

	Florida Residents	Non-Florida Residents
College Credit Per Semester Hour**	\$23.25	\$46.50

Non-Credit

Semester Hour Equivalent

(Per clock hour) Range \$.37 - \$.64 \$.74 - \$1.28

*Anticipated for 1 July 1988-1989

**(Includes Financial Aid & Student Activities and Service Fees)

NON-REFUNDABLE FEES*

- | | |
|--|---------|
| 1. Application Fees | \$15 |
| 2. Late Registration Fee (per term) | \$10 |
| 3. Real Estate fees established by SREA | N/A |
| 4. Graduation Fee | \$15 |
| 5. Nursing Fee (Insurance) | \$15 |
| 6. Transcript Fee | \$00 |
| 7. International Student Processing Fee | \$20 |
| 8. Applied Music Fee- | |
| One-half clock hour | \$ 7.50 |
| One clock hour | \$15 |
| 9. Special fees, lab fees and other fees (see course description for specific fees). | |

*Anticipated for 1 July 1988-1989

STUDENT and NON-REFUNDABLE FEES at time of catalog printing anticipated to remain in effect until 30 June are the same as on pages 53, 54 with following exceptions:

College Credit

Per Semester Hour \$22 in State \$44 out of State

Application Fees \$10

Transcript Fee \$ 2

FEES FOR OCCUPATIONAL COURSES

Students taking occupational courses for reasons unrelated to employment may be required to pay a fee based on the direct cost of instruction of such courses.

REFUNDABLE FEES

(Refundable when schedule changes are made during add-drop)

See Course Descriptions for specific fees.

BAD CHECK RULE

The following rules apply to all checks returned to Lake-Sumter Community College due to insufficient funds.

1. A \$10 charge will be assessed by the college for handling each returned check.
2. A returned check will result in cancellation of registration if classes have not started. To be permitted to register, the amount of the returned check must be paid in cash or by a cashier's check, plus the \$10 returned check charge.
3. A returned check given for any purpose by a student who is attending classes will result in the student being dropped from class. Readmission will be permitted only after payment is made of the amount of the returned check by cash or by a cashier's check, plus the \$10 returned check charge.
4. Any student whose record indicates that a returned check has not been cleared as indicated in (2) or (3) above will not be permitted to register for future courses at Lake-Sumter Community College. In addition, any request for a transcript of the student's college record will be refused.

REFUND POLICY

Credit Courses. Students will receive refunds as indicated below:

- | | |
|--|------|
| 1. Class is cancelled by the college | 100% |
| 2. Complete withdrawal prior to the end of the add-drop period | 100% |
| 3. Special fees until the end of the add-drop period and/or
cancellation of class | 100% |

A student who is suspended and or dismissed is *not* entitled to a refund.

NOTE: Application and Late fees are not refundable.

Change in Credit-hour Load.

A student who adds or drops a course will have his/her fees adjusted, either by paying for an addition or receiving a refund as required by the change.

No refund is made unless the student requests it and follows the guidelines given under Refund Procedures.

EXTENUATING CIRCUMSTANCES

If any student is forced to withdraw from the college after the add-drop period, due to extenuating circumstances, an appeal with appropriate documentation may be made to the Office of Admissions. The appeal will be acted upon by a designated committee.

Non-Credit Courses.

A 100% refund will be issued upon completion of the official withdrawal procedure prior to the second class meeting.

Special fees are not refundable unless the college cancels the class.

REFUND PROCEDURE

Refunds of registration fees will be issued *only* when authorized by the Associate Dean of Students/Admissions on the official form which is presented to the Business Office.

1. Issuance of refunds will occur three to four weeks after the major registration period for the term is over, and the add-drop period has ended.
2. Full refunds are made *only* when officially requested by the student and when a complete withdrawal occurs *on or before the final day of add-drop*.

Refund Monies.

Deductions from authorized refunds will be made for unpaid accounts due the college.



STUDENT FINANCIAL AID

The primary purpose of the Student Financial Aid Program at Lake-Sumter Community College is to provide financial assistance for academically qualified students who could not further their education without support. The college expects the student and/or his family to make the maximum possible contribution to meet his educational expenses.

The Student Financial Aid Program provides assistance in the form of scholarships, grants, loans and employment. A financial aid booklet of consumer information is available in the Financial Aid Office.

Unless otherwise noted, applications for aid should be filed by April 1 to be priority consideration for the following academic year, and by November 1 for Spring Term priority consideration.

Complete information on all aid programs is available in the Financial Aid office.

ACADEMIC PROGRESS

Students at Lake-Sumter Community College must meet specified standards of academic progress in order to be eligible to receive financial assistance.

The minimum acceptable standards include the following three criteria:

1. Academic Performance. This is measured by cumulative grade point average (CGPA).
2. Progress Toward Degree or Certificate. This is measured by the total number of terms of attendance.
3. Completion of Educational Objective. This is measured by a time frame which establishes a maximum number of semesters of eligibility to receive aid.

The standards described here apply to all federal, state, and institutional programs, except those programs which have more stringent standards.

Eligibility Requirements

Initial Awards

1. For entering freshmen who are first time college students there are no specific academic requirements for secondary school work.
2. For transfer students there are no grade point average requirements for work previously attempted at other institutions. However, credit hours attempted at all previously attended institutions which are accepted by L-SCC will be calculated into the L-SCC time frame formula.

Renewal Awards

To be eligible to receive renewal awards financial aid recipients must:

1. Maintain at least a 1.75 cumulative grade point average (CGPA) for the first 23 credit hours of work attempted at L-SCC.
2. Maintain at least a 2.0 cumulative grade point average (CGPA) for all work attempted at L-SCC which totals 24 hours or more.

Monitoring Satisfactory Progress

The cumulative grade point average (CGPA), total number of semesters enrolled, and total hours of completion will be calculated for each financial aid applicant/recipient prior to making any awards. The calculations will be based on cumulative grades, semesters and hours at the end of the student's previous term of enrollment.

Probation

Potential recipients of renewal awards who have not met the minimum standards of satisfactory progress will be notified that they are on probation for their next term of enrollment. They will, however, retain eligibility to receive aid for that term.

Suspension

Students who fail to meet the minimum standards of progress after one term of probation will be ineligible to receive any additional financial aid awards until the standards of satisfactory progress are again met.

Reinstatement of Eligibility

Financial aid recipients whose financial aid has been suspended may regain eligibility once the minimum standards have been met. A reinstatement of eligibility, however, does not necessarily guarantee that the student will be awarded financial aid for the following academic year. Awards are made on the basis of several factors, including the availability of funds and individual program requirements.

Appeal

Returning L-SCC students who are potential recipients of initial financial aid awards who are determined to be ineligible due to their previous academic record, may file a written appeal to the Director of Financial Aid. The circumstances will be considered by the Director, who may allow a probationary period to assist the student in meeting the Standards of Satisfactory Progress for financial aid recipients.

It is the student's responsibility to be familiar with the Standards of Satisfactory Progress.

The Director of Financial Aid reserves the right to make adjustments deemed necessary in instances of extenuating circumstances.

INSTITUTIONAL SCHOLARSHIPS

Scholarships for students are made available through the contributions of individuals, organizations, and groups. Scholarships may be granted on the basis of academic ability, special talent, and/or financial need.

Donors to the scholarship program may specify the criteria for recipient selection, or they may make unrestricted contributions and recipient selection will be made by appropriate college personnel.

It is through donations to the college scholarship program that the local community is able to assist deserving students in meeting their educational goals.

FLORIDA UNDERGRADUATE SCHOLARS FUND

Under this program, scholarships are awarded to outstanding Florida residents who are first time college students. Eligibility is based on high school grades and standardized national test scores.

GRANTS

Lake-Sumter Community College participates in several grant programs.

PELL GRANT — The Pell Grant is a federal aid program designed to provide financial assistance to those who need it to attend post-high school educational institutions. Pell grants are intended to be the basic type of aid and may be combined with other forms of aid in order to meet the student's financial need.

FLORIDA STUDENT ASSISTANCE GRANT — The Florida Student Assistance Grant Program provides grants to capable students who are Florida residents and who have exceptional financial need. The amount of a grant is based on the financial need of a student and the cost of attendance. Deadline for application is April 1 of the previous academic year.

SUPPLEMENTAL EDUCATIONAL OPPORTUNITY GRANTS — The Supplemental Educational Opportunity Grant (SEOG) Program is a source of grant aid sponsored by the federal government. In order to be eligible for SEOG assistance, a student must be enrolled on at least a halftime basis and demonstrate exceptional financial need. This need is determined by a systematic and consistent need analysis system.

LOANS

The following federal, state and local loan programs are available to students at Lake-Sumter Community College.

GUARANTEED STUDENT LOAN — Undergraduate students may borrow up to \$2625 per academic year from an approved lending agency, subject to verified financial need, not to exceed educational costs. Repayment is begun after graduation with interest at eight percent (8%). Information and applications are available in the Financial Aid Office.

PARENT LOANS FOR UNDERGRADUATE STUDENTS — These loans are made to parents of college students by banks or credit unions to provide additional funds for education expenses. Repayment begins shortly after the funds are issued.

COLLEGE SHORT TERM LOAN FUND — This loan fund is available to students for emergency short-term use. Loans may not exceed the amount of the borrower's tuition, fees and books. There is no interest on these loans which are repayable before the end of the term in which they were borrowed. A \$10 collection fee will be added to the principal amount of any overdue or extended loan.

EDWARD FRANK PATROWICZ FUND — Dr. and Mrs. Tully C. Patrowicz established this loan fund in honor of his father, a life-time professional musician. The loan is made available to talented trumpet students who are above average in scholarship and character and in need of financial assistance. The loan is payable following the conclusion of the student's formal education with an interest rate in the amount of that charged by commercial lending agencies.

PAM SUTTON MEMORIAL LOAN FUND — This loan fund was established at the request of Mr. and Mrs. Frank Sutton in memory of their daughter, Pam, an honor graduate of Lake-Sumter Community College. Contributions to the fund were made by her family and friends. Loans from this fund are for one term, have no interest, and are especially for students who have a minimum GPA of 3.0. Other guidelines are available in the Financial Aid Office.

EMPLOYMENT

COLLEGE WORK-STUDY PROGRAM — This program provides employment opportunities for students enrolled on at least a half-time basis to assist them in earning the funds necessary to meet the cost of postsecondary education. Most student employment is provided on campus.

COLLEGE CAREER WORK EXPERIENCE PROGRAM — This program provides educationally relevant part-time employment for fulltime students with financial need who are two-year state residents and Florida high school graduates.

PUBLIC SCHOOL WORK EXPERIENCE PROGRAM — This program provides an opportunity for sophomores with a 3.0 GPA to work in public high schools as teacher aides or lab assistants.

OTHER PROGRAMS

The college cooperates with other state and federal programs providing financial assistance to students such as:

Division of Blind Services

Social Security Administration

Veterans' Administration

Vocational Rehabilitation

Additional information regarding these programs is available in the Lake-Sumter Community College Financial Aid Office.

VETERANS' ADMINISTRATION POLICIES

Authorization. Lake-Sumter Community College is approved for the education and training of veterans and other eligible persons under all public laws now in effect.

Application. Students who may be eligible for educational benefits should submit an application for admission to the college and apply to the Veterans' Affairs Office (VAO) on campus for veterans' benefits. After official enrollment, the college can certify the student in accordance with current Veterans' Administration (VA) regulations. Benefits will be determined by the VA.

Approved Programs and Courses. The VA will pay benefits only if a veteran or other eligible person is seeking a degree (A.A. or A.S.) and only for those courses which fulfill the requirements of the degree. A course taken for audit cannot be approved for benefits.

A student receiving veterans' benefits (1) may enroll for independent study courses (i.e., television and cooperative education), provided more than one-half the credit hours required for certification are earned through regular classroom courses, and (2) may change degree programs only within VA regulations and with the approval of a college academic counselor.

Academic Records. A cumulative permanent record is kept on each student. This record shows for each term all college credits attempted and earned, all grades earned, including incompletes (I), audits (X), withdrawals (W), and term and cumulative grade point averages (GPA). Each student is distributed a grade report at the end of each term indicating course work for the term, grades earned, term GPA and cumulative GPA.

Grading System. The college uses the following grading system:

<i>Grade</i>	<i>quality points per credit hour</i>
A	4
B	3
C	2
D	1
F	0
W	0
S	0
X	0
I	0

If an "I" is not removed by the date indicated on the college calender, it is recorded as an "F".

Only grades of A, B, C, D, F are used in computing a grade point average (GPA).

Academic Progress. All students receiving financial aid, including those receiving veterans' benefits, must achieve satisfactory progress toward educational goals by meeting the established standards.

Please refer to the standards in the front of this section. Also, read the complete requirements as published in the brochure "Standards of Satisfactory Progress for Financial Aid Recipients" which is available in the Records Office and the Financial Aid Office.

It is the student's responsibility to be familiar with the standards of academic progress.

Reinstatement. A student who is declared ineligible for veterans' benefits due to unsatisfactory progress and who wishes to be reinstated must undergo counseling.

Changes of Status. VA benefits will be reduced if a student, by auditing or withdrawing from a class, changes enrollment status from fulltime to three quarter-time or halftime, or from three quarter-time to halftime.

Attendance. Punctual and regular attendance is encouraged in all courses, and it is the student's responsibility to become aware of each instructor's policy concerning absences. Each instructor is requested to notify the Financial Aid Office on campus of a veteran or other eligible person who has been excessively absent. Any student thus reported who cannot give a satisfactory explanation and does not resume class attendance will be reported to the VA as having terminated as of the last day of attendance.

Fee Deferment. Florida law provides for deferment of payment of fees for veterans and other eligible persons. This deferment is limited to one term

per academic year with an additional deferment only when there is a delay in receipt of benefits.

Tutorial Assistance. Veterans and other eligible persons receiving an educational assistance allowance are eligible for reimbursement for tutorial assistance, if requested and needed. The course instructor must certify that the student needs private tutoring.

Conduct Standards. Conduct standards for veterans and other eligible persons are the same as those for all students, as stated in the college catalog. If a student receiving veterans' benefits is dismissed from the college for disciplinary reasons, a report will be made to the VA and benefits will be terminated. A student thus dismissed may appeal to the college for readmission in a subsequent term.

Complete Information. The campus Records Office has complete information on all applicable Veterans' Administration policies, academic progress, as well as appropriate applications and forms.



STUDENT SERVICES

COUNSELING

The Student Services program of the college is designed to help students develop habits, attitudes, and skills necessary for successful learning and to make progress toward their own personal maturity. Guidance and counseling services are provided to assist students in:

- Getting acquainted with the college
- Selecting a college program
- Improving study techniques
- Choosing a career
- Selecting a senior institution
- Applying for financial aid
- Finding a job
- Discovering interests and aptitudes
- Understanding one's self and others
- Resolving a personal problem

To take advantage of these services, students need only see an L-SCC counselor. Conferences are held in strictest confidence. Aids used in counseling include a wide assortment of standardized tests, college catalogs, career materials, military information, employment statistics, and other materials of an educational or vocational nature.

PLACEMENT TESTING

As a result of Florida Statutes concerning college preparatory instruction in community colleges (FS 240.117), all degree-seeking students and others wanting to take an English or math course must take an approved placement test in English, reading, and math before registering for classes. The purpose of the test is to identify students' competencies in these three areas in order that they register for classes compatible with those competencies.

Where sufficient deficiencies are noted, students will be required to take courses designated as college preparatory. These include Basic Composition Skills, (ENC 0001), College Study Skills (ENC 0040), College Preparatory Reading (REA 0001), Introduction to Algebra (MAT 0002), and Elementary Algebra (MAT 0024). Full-time students who qualify will take these courses during their first term of enrollment. Part-time students must complete the

courses within their first 12 credits. *Courses must be satisfactorily completed within three terms.*

Any course which is covered by the State Board rule (English and mathematics) can be counted toward graduation only if a "C" or better is the grade in the course.

ACADEMIC ADVISING

Academic advising is a process by which students get help with selecting the appropriate courses for their major fields of study. Each term students will have the opportunity to receive this assistance individually or in small groups. All students will initially see a college counselor for advisement, and may eventually be assigned a faculty advisor in their chosen field. Although counselors and faculty advisors give assistance, *students bear major responsibility for proper course selection.*

CAREER CENTER

The Career Center, located in the Multi-Purpose Building, provides career planning, cooperative education/work experience opportunities, and job placement assistance to all Lake-Sumter Community College students and alumni. The Center's objectives are to assist students in developing realistic life/career goals, acquiring career related work experience, and developing skills necessary for effective job search strategies. Specific services include:

INDIVIDUAL COUNSELING for students who have not decided on a career, or for those who have changed their minds. Tests and inventories can be taken to help identify career possibilities, while other resources, including a computer assisted career development program (CHOICES), are available to help research any identified careers. Using the results of these searches, counselors help students set realistic life/career goals.

COOPERATIVE EDUCATION PROGRAM enables students to gain work experience related to their academic majors. Refer to the Cooperative Education heading for more information.

JOB PLACEMENT is available for students who are looking for employment prior to and/or upon graduation from Lake-Sumter Community College. Students and alumni can review local and statewide job openings that are updated each week. Federal and state job openings are also available for review. Assistance is also available in perfecting job search techniques, resume preparation, and interview skills.

SPECIAL PROGRAMS designed to assist adults re-entering the job market or working for the first time are also offered. Seminars covering such topics as Career Planning, Self-Confidence, Stress Management, and Goal Setting are offered as part of these services.

THE LEARNING OPPORTUNITY CENTER

Open laboratories are conducted in mathematics, reading and English in the Learning Opportunity Center, located in the Technology Building. These laboratories are open at scheduled hours throughout the day Monday through Friday, and are available for use by students for individual work and problem solving. Also provided through the Learning Opportunity Center are tutoring services and academic testing, available as required for any student referred by an instructor.

THE COMPUTER LABORATORY

Located on the second floor in the Multi-Purpose Building, the Computer Laboratory is available for use by all Lake-Sumter Community College students on an individual, as-needed, basis. This laboratory contains IBM equipment and a variety of specialized software programs. The laboratory is staffed by a para-professional who is available to assist each student individually. This laboratory is open throughout the week at scheduled hours.

THE BUSINESS OCCUPATIONS LABORATORY

A fully-equipped business occupations open laboratory is available at scheduled hours to business students. This laboratory is located in the Multi-Purpose Building.

SMALL BUSINESS CENTER

The Small Business Center was opened in January 1983 to provide service to the business community. The services provided are in the following areas: Counseling for business management; loan packaging assistance; financial management counseling; assistance in marketing techniques; tax assistance; guidance in personnel management techniques and inventory control. The Small Business Center also serves as a data resource bank.

In addition to providing free counseling services, the Center sponsors workshops and seminars for which a nominal fee is charged.

One of the Small Business Center's major projects is its participation in the Lake County Small Business Incubator Center in Eustis, Florida. This is an ongoing project which began in 1985. The college is one of the sponsor organizations with the City of Eustis, the Eustis Chamber of Commerce, the Lake County Private Industry Council, and the Industrial Development Commission of Central Florida. The Small Business Center is responsible for the operation of the Incubator Center.

Also offered, in cooperation with the American Management Association, is a management training program. This program is designed to provide professional training for new, participating and prospective managers and owners of small businesses.

RETIRED SENIOR VOLUNTEER PROGRAM (RSVP)

The Retired Senior Volunteer Program (RSVP) is sponsored by Lake-Sumter Community College as a community service. L-SCC is the only community college in Florida to have an RSVP group on campus. Our RSVP volunteers serve through non-profit private and public community organizations.

Anyone 60 or older, retired or semi-retired, is eligible to become an RSVP volunteer, whatever the level or education, experience or income. Once you've agreed on a volunteer activity that suits your interests, you will receive a brief orientation from the RSVP staff and additional instruction and supervision at your volunteer site.

RSVP receives grant money from ACTION and the Lake and Sumter County United Way to insure volunteers for accidents and liability and can also offer mileage reimbursement between home and an assignment for a limited number of volunteers.

The program encompasses a number of community initiatives so that the wealth of experience offered by the retired volunteer may help solve community problems. Among these initiatives are child abuse, crime prevention, alcohol and drug abuse and acute care.

A full-time director and office are located on our Leesburg campus and a part-time director serves Sumter County.

For further RSVP information call the campus at 787-3747.

COLLEGE UNION

The College Union is maintained as the "community center" for the college family—students, administration, faculty, staff, alumni, and guests. The Union houses a number of facilities including the bookstore, food service, and RSVP Office. It also houses the college lounge, clinic, office of the Director of Student Activities, office of Student Government Association, and a workroom.

HEALTH SERVICES

The College Clinic is located in the College Union. In case of accident or illness students should report to the Clinic, which is under the supervision of the Director of Student Activities.

Student Services, with the assistance of a Health Committee, sponsors a Health Fair each year in which students and faculty members and immediate families may undergo voluntary screening for possible health problems.

DISABLED STUDENTS

All programs at Lake-Sumter Community College are open to students with disabled. Facilities have been constructed or modified to accommodate disabled students.

Services available to disabled students include admissions counseling, tutoring, reserved parking areas, guide services, and special instructional and library resources.

STUDENT GOVERNMENT ASSOCIATION

The Student Government Association of Lake-Sumter Community College, a member of the Florida Junior College Student Government Association, is composed of all Lake-Sumter College students — full-time, part-time, day or evening.

The purpose of the association is to promote active, responsible and cooperative citizenship through participation and self-government. The SGA will also establish rules for effective procedures and conduct for extra-curricular activities in harmony with student interests.

The Student Government Association sponsors two elections each year. The fall election is for the purpose of electing senators, and the spring election is for electing the executive officers. The executive officers, under the auspices of the Associate Dean of Students/Admissions, select a faculty sponsor to serve in an advisory capacity for a period of one year. The Director of Student Activities also serves as an advisor.

To be eligible to hold an executive office in Lake-Sumter Student Government Association students must have a 2.0 cumulative average and maintain a 2.0 Grade Point Average (GPA) and carry a minimum of nine (9) hours per semester. They must have completed at least 18 hours by the end of the Spring semester of the year they are seeking office and not intend to graduate from L-SCC until the spring semester of the college year they are in office or at a later date.

Candidates for Senators must have a 2.0 cumulative average. New students must have a "C" average during their senior year in high school. All must maintain a 2.0 cumulative average to serve as senators.

Other information concerning the Student Government Association can be found in the Student Handbook.

Miss Lake-Sumter Pageant. The Miss Lake-Sumter Pageant, which was initiated in 1965, has become an annual affair. It is held in the Fine Arts Auditorium during the Fall Term. Any Lake-Sumter Community College single female student enrolled in at least nine (9) hours with a cumulative grade point average of 2.0 or better is eligible to participate. The entry does not have to be a member of the sponsoring club or organization. Clubs and organizations act as sponsors for interested women. Categories included in the competition are personal interviews, street dress, bathing suit, evening gown, and talent. A panel of qualified judges select Miss Lake-Sumter Community College and her court. Miss Lake-Sumter Community College represents the college in other pageants, at parades, and other special events throughout the year.

CLUBS AND ORGANIZATIONS

The college encourages participation in student activities for all full and part-time students. All clubs and organizations are assisted by a faculty sponsor.

A.P.P.L.E. (Associated Professional People Learning to Educate). Open to all education majors.

A.P.P.L.E. is a professional club, operating to enhance the preparation of education students for the assumption of professional responsibilities, and make students aware of opportunities available in the field of teaching. The club exists primarily to foster interest in and promote teaching as an exalted profession.

Black Student Union. Open to all students.

The Black Student Union is composed of individuals who are interested in black culture, literature, art, music, and contemporary thought. Its purpose is to promote active, responsible, cooperative citizenship through participation in self government. Functions will be related to the college and community.

Christian Campus Ministry. Open to all students.

The aims of this group shall be to relate the individual student properly to his church and denomination during college and provide denominational leaders with direct access to students and vice versa; to promote spiritual and moral growth; and to present a positive Christian witness to the campus and community.

Circle K. Open to all students.

Circle K is a service organization through which college men and women find a means for responsible student action in their communities and a more

active involvement in campus life. Circle K is a practical laboratory for the development of personal leadership skills and the growth of personal initiative in analyzing the needs of our environment and attempting to find the solutions for them. It is also a means of forming friendships, working in a common cause with other students and simply having fun. Kiwanis Club of Leesburg is the Kiwanis sponsor of Circle K at Lake-Sumter Community College.

El Circulo De Latinos Y Amigos. Open to all students.

This club brings together in friendship and learning area residents interested in the Spanish language, history, and culture.

Its purpose is to develop appreciation of Spanish culture and its contribution to our current way of life; to study the Spanish speaking countries of the world and explore the variations in language and culture as they have developed in different parts of the world as the result of different native influences; and to provide social, creative, aesthetic outlets for persons of all ages.

Musical Organizations. Open to all eligible students.

Musical performing organizations that are available on the Lake-Sumter Community college campus are Concert Choir, Symphonic Band, and Jazz-Lab Band. For further information, contact the Music Department.

Nursing Students' Association. Open to pre-nursing students and all enrolled nursing students.

The purpose of Lake-Sumter Community College Nursing Students' Association is to aid in the preparation of nursing students for the assumption of professional responsibilities. It assists in development of the whole person, and his/her responsibility for the health care of people in all walks of life. It promotes and encourages participation in community affairs toward improved health care and the resolution of related social issues. District 21 at L-SCC is a constituent of the National Student Nurse's Association, the largest independent student organization in the country.

Phi Beta Lambda. Open to any student enrolled in at least one business class.

The purpose of this club is to give the student a better understanding of the business world. The club has money-making projects in order to send delegates to state and national competition, as well as having business oriented programs with guest speakers.

Phi Theta Kappa. Honor students by invitation.

Phi Theta Kappa is the only national scholastic honor society for American Junior Colleges.

Membership in Phi Theta Kappa is conferred on those junior college students who are in at least the upper ten per cent by scholastic rank of the total enrollment of their college. Initiates must be bona fide Lake-Sumter Community College students planning to receive an AA Degree at Lake-Sumter Community College and transfer to a four-year college or university. They must have completed one term of a transfer program as it appears in the college catalog, and must be judged of good moral character and possessed of qualities of citizenship by the faculty of their junior college. Eligible students are selected from the Dean's List or President's List (Fall and Spring Terms).

Rotaract. Open to all students.

The purpose of Rotaract is to develop leadership and responsible citizenship through service to the community, to advance the cause of international understanding and peace, and to promote recognition and acceptance of high ethical standards as a leadership quality and vocational responsibility. This club is sponsored by the Rotary Club of Leesburg.

Student Forum. Open to all students.

Student Forum exists to provide students an opportunity to meet and discuss any issue they want to, as well as to invite any speaker on any topic they deem significant.

Theatre Arts Society. Open to all students.

The Theatre Arts Society is a service club which exists to foster interest in and promote the performing arts at Lake-Sumter Community College. Opportunity is provided for experience in all phases of theatre.

UCAM. Open to all students.

UCAM (United Campuses to Prevent Nuclear War) is a student interest club. It was founded in 1982 in response to concern about the threat of nuclear war. Today, UCAM has members and contacts on more than 700 campuses in every state and Canada, more than 60 chapters and a Washington-based professional staff.

Volunteer Services. Open to all eligible students.

This organization provides qualified volunteers to serve the communities in Lake and Sumter Counties in the areas of Human Services.

Young Democrats. Open to all students.

The purpose of this organization is to stimulate in young people an active interest in governmental affairs, to increase the efficiency of popular government, to foster and recruit new members for the Democratic candidates, to help acquaint voters with the issues and the candidates, and to provide

our people through its administration of the highest degree of justice, social welfare, and happiness.

Young Republicans. Open to all students.

The purposes of this organization are to develop an aggressive and serviceable organization, to attract young men and women into the Republican Party, to support the platform of the party and to secure the election of all duly nominated Republican candidates.

DIRECT SUPPORT ORGANIZATIONS

Alumni Association. The L-SCC Alumni Association is open to all graduates, former students, faculty, and friends of the college.

The purposes of the association are to promote the welfare of Lake-Sumter Community College, its graduates, and former students; to promote the cause of higher education; and to render service to the graduates and former students through the maintaining of close relationship with the college and by keeping excellent channels of communication open through which the college can inform its Alumni about programs, goals and directions.

L-SCC Athletic Boosters, Inc. The Athletic Boosters, Inc. is an organization which is open to anyone who wishes to support the college athletic program. The organization accepts individual contributions and sponsors fund-raising events to assist the college in awarding athletic scholarships and in the overall enhancement of the athletic program.

L-SCC Foundation, Inc.

The L-SCC Foundation, Inc. is also an L-SCC direct support organization. Information on the Foundation and its programs are found under the heading Lake-Sumter Community College Foundation, Inc.

PUBLICATIONS

The college publishes a student newspaper, The ANGLER, and a college magazine, the ODYSSEY. The staff for both publications consists of students under the direction of a faculty advisor. Students interested in serving on the staff of the ANGLER or the ODYSSEY are encouraged to contact the appropriate faculty advisors.

INTRAMURALS

The Intramural Program provides an opportunity for students, faculty and staff to participate in the individual, dual and team activities of their choice.

Activities are selected which will provide enjoyment and recreation at Lake-Sumter Community College and contribute to skills for leisure time later in life. The college provides this widely varied program for both men and women in order that all students may have a choice of activities.

The growth and success of the Intramural Program depends primarily upon participation. It is hoped that each student, faculty and staff member will take part in this activity. Team events are held on Tuesday and Thursdays from 11 a.m. to 12:30 p.m. For more information contact the Coordinator of Intramurals.

Activities

Backgammon
Basketball
Bike Race
Bridge
Checkers
Chess
Flag Football Team
Golf Event
Pass, Punt & Kick
Powder Puff Football Team
Racquetball
Soccer
Softball
Table Tennis
Tennis
Volleyball Team
Weight Lifting
Competition*

*Miss/Mr. Fitness Award

ATHLETICS

Any student interested in participating in varsity athletics should contact the college Athletic Director. Lake-Sumter Community College fields varsity teams in (1) golf, (2) basketball and (3) volleyball. The college holds membership in the Florida Community College Activities Association and the National Junior College Athletic Association. In order to qualify for participation in any intercollegiate athletic activity, an athlete must fulfill the requirements set forth by the Florida Community College Activities Association and must be enrolled as a full-time student (12 semester hours).

In addition to these requirements, a student shall not be eligible to participate in a particular sport if he has previously competed for two full seasons in that sport on the collegiate level.

It shall be the duty of the Athletic Director to determine and declare the eligibility status of all students participating in the intercollegiate athletic activities of the college. The above determination and declarations shall be based on the official records of the Office of Admissions.

HOUSING

Lake-Sumter Community College has no dormitory facilities. Current lists of private rooming facilities in the district may be posted on the bulletin board by the Bookstore. The college assumes no responsibilities for providing or supervising student housing.

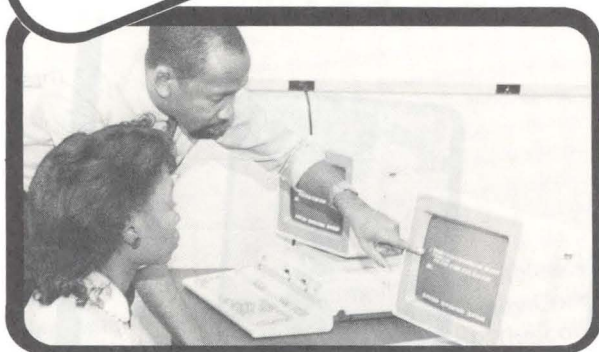
CONDUCT

Any student who enrolls at Lake-Sumter Community College is expected to meet standards of good citizenship and to be a credit to the college, the community and himself.

Each student, by registering, agrees to abide by the rules of conduct described in the Student Handbook. Violation of any of these rules may lead to disciplinary action. Each student should become familiar with the rules of conduct.



TOWARD
THIS SCREEN
SIDE



date _____ subject _____

ASSOCIATE IN ARTS DEGREE

The Associate in Arts Degree (A.A.) programs are designed for those students who plan to transfer to a four-year college or university. The courses of study are equivalent to those offered to freshman and sophomore students in the state universities of Florida. It is to be noted that all degree programs need not be completed in two years and that each degree program displayed in this catalog is to be used as a planning guide only.

Articulation. The student who earns an Associate in Arts degree will be accepted as a junior at any state university in Florida. Many schools and colleges within the university have selective admission standards and may include specific course requirement, (i.e. foreign language, specific sciences), minimum grades, and/or test scores. It is the student's responsibility to investigate transfer requirements at his or her chosen institution in order to take the appropriate course work while at Lake-Sumter Community College.

Graduation Requirements. It is the student's responsibility to meet all the requirements as outlined in the Graduation Requirements section of this catalog.

Students must complete 12 semester hours course work in English and six hours in mathematics before they can receive a community college Associate in Arts degree or enter the upper level of a state university. An English course is defined as any semester-length course within the general study area of the humanities in which the student is required to produce written work of at least 6,000 words. The mathematics course work must include college-level algebra or higher. Any course which is covered by the State Board rule (English and mathematics) can be counted toward graduation only if a "C or better" was the grade received in the course.

General Education Requirements. Lake-Sumter Community College believes that general education makes an important contribution to the total development and educational growth of the student by providing a basic liberal education. All degree programs, therefore, include general education course work, 42 hours being typical for an Associate in Arts program.

GENERAL EDUCATION

Students meeting all of the requirements in one of the University Parallel (Transfer) programs will be certified as having completed the general education requirements as agreed upon by all public institutions of higher learning in Florida.

A minimum of 42 semester hours of credit in general education is required in each transfer program. In addition, the physical education requirement (unless waived) must be met in many degree programs.

General education courses are distributed among the subject areas described below. When a program specifies a general education elective, any of the courses listed below may be used.

General Education Courses

English Composition:

A minimum of 12 credits as stated in each program.

Humanities:

A minimum of 6 credits taken from

AML 2010, AML 2022, (American Literature)

ENL 2012, ENL 2022 (English Literature)

LIT 2110, LIT 2120, (World Literature)

A minimum of 3 credits, unless the program states otherwise, taken from
ARH 2050, ARH 2051, ARH 2610

HUM 1020 (Humanities)

MUH 2011, MUL 2211 (Introduction to Music, Survey of Music Literature)

PHI 2010 (Philosophy)

Mathematics:

A minimum of 6 credits, unless the program states otherwise, taken from
General Education

MAT 1033

MGF 2202

Science and Mathematics Programs

MAT 1033

MAC 1104

STA 2024

MAC 1114

MGF 2113

MAC 1132, MAC 2311, MAC 2312, MAC 2316, MAC 2313

Science:

A minimum of 6 credits, unless the program states otherwise, taken from:

Biological Science:

APB 1150 (Life Science)
APB 2203C, APB 2204C (Anatomy and Physiology)
BOT 2010C (Botany)
BSC 1010C (General Biology)
MCB 2010C (Microbiology)
OCE 1000 (Marine Environment)
ZOO 2013C (Zoology)

Physical Science:

AST 1002 (Astronomy)
CHM 1020, CHM 1025C, CHM 1205C, CHM 2045C, CHM 2046C
(Chemistry)
PHY 2048C, PHY 2049C, PHY 2053C, PHY 2054C, (Physics)
PSC 1120, PSC 1020 (Physical Science)

Social Science:

A minimum of 9 credits unless the program states otherwise, taken from
ANT 2410 (Anthropology)
AMH 2010, AMH 2020, EUH 1000, EUH 1001, (History)
DEP 2004, PSY 2012, DEP 2002 (Psychology)
INR 2002, POS 1001, POS 2041, POS 2112 (Political Science)
SYG 2000, SYG 2010, SYS 2410 (Sociology)

Electives:

Any course not considered occupational can be used as an elective.

UNIVERSITY PARALLEL/TRANSFER

At Lake-Sumter Community College, a student may complete the first two years of a wide variety of college majors. Students who are undecided about a major field or those who plan to prepare for a career not specifically outlined in this catalog are encouraged to use the General Transfer program as a guide. During the academic advising period, the student, with the aid of a counselor, will select general education courses and pre-professional courses recommended by the senior colleges. Catalogs and counseling manuals from transfer institutions are available to assist in course selection.

A partial list of the potential programs that can be pursued at a senior institution after completing the Associate in Arts degree at Lake-Sumter Community College is provided for student guidance.

AGRICULTURAL, CONSERVATION, AND ENVIRONMENTAL SCIENCES

- Agronomy
- Animal Science
- Conservation
- Dairy Science
- Ecology
- Entomology and Nematology
- Environmental Design
- Fish, Game, or Wildlife Management
- Food and Resource Economics
- Food Science and Human Nutrition
- Forestry
- Horticulture
- Oceanography
- Ornamental Horticulture
- Poultry Science
- Range Management
- Resource Conservation
- Soils Science

BEHAVIORAL AND SOCIAL SCIENCES

- Anthropology
- Archeology
- Criminal Justice
- Economics
- Geography
- Home Economics
- Industrial Management
- International Relations
- Law Enforcement
- Library Science
- Political Science
- Psychology
- Public Administration
- Public Relations
- Recreation
- Rehabilitation Counseling
- Social Work
- Sociology
- Urban Planning

BIOLOGICAL SCIENCES

- Anatomy
- Bacteriology

Biochemistry
Biology
Biophysics
Botany
Embryology
Entomology
Genetics
Histology
Marine Biology
Microbiology
Neurosciences
Nutrition
Pathology
Pharmacology
Physiology
Radiobiology
Zoology

BUSINESS, MANAGEMENT, AND ADMINISTRATION

Accounting
Advertising
Banking
Business and Commerce
Business Economics
Business Statistics
Computer Science
Credit Management
Economics
Finance
Hospital Administration
Hotel and Restaurant Management
Insurance
International Business
Investments/Securities
Labor-Management Relations
Management
Marketing
Public Relations
Real Estate
Transportation Management

EDUCATION

Adult Education
Agriculture Education
Art Education

Audiology
Business Education
Dance
Early Childhood Education
Education of the Deaf
Education of the Emotionally Disturbed
Education of Exceptional Children
Education of the Gifted
Elementary Education
Health Education
Home Economics Education
Industrial Arts/Vocational Technical Education
Library Science
Mathematics Education
Music Education
Physical Education
Reading Education
Remedial Education
Science Education
Secondary Education
Special Education
Special Learning Disabilities
Speech Pathology

ENGINEERING AND ARCHITECTURE

Aeronautical Engineering
Agricultural Engineering
Architecture*
Architectural Engineering*
Bioengineering
Biomedical Engineering
Ceramic Engineering
Chemical Engineering
Civil Engineering
Electrical Engineering
Engineering Technology
Environmental Engineering
Geological Engineering
Geophysical Engineering
Industrial Engineering
Landscape Architecture*
Marine Engineering
Mechanical Engineering
Mining Engineering
Nuclear Engineering

Ocean Engineering
Petroleum Engineering

*Transfer advised after 1 year

ALLIED HEALTH

Hospital Administration
Medical Laboratory Technology
Medical Record Administration
Mental Health

HUMANITIES AND ARTS

Art
Art History
Classics
Communications
Creative Writing
Drama
English
Fashion Design
Foreign Language
History
Interior Design
Journalism
Library Science
Linguistics
Literature
Music
Philosophy
Radio Television and Film Communication
Religion
Speech

MATHEMATICAL AND PHYSICAL SCIENCES

Astronomy
Astrophysics
Chemistry
Earth Sciences
Geology
Mathematics
Metallurgy
Meteorology
Natural Sciences
Oceanography
Physical Sciences
Physics
Statistics

The university parallel programs are designed to meet the needs of students who expect to transfer to a four-year college or university after the completion of their work at this institution. Upon meeting the graduation requirements and the completion of one of the following planned programs, the student is awarded an Associate in Arts degree.

The following transfer programs are designed to lead to advanced degrees at senior colleges.

- Agriculture
- Art or Art Education
- Broadcasting/Communications
- Business Administration
- Computer Science
- Criminology and Corrections
- Education
- Engineering
- Human Services
- Journalism
- Medicine and Dentistry
- Music
- Nursing
- Occupational Therapy
- Optometry
- Pharmacy
- Physical Therapy
- Police Administration
- Social Science
- Veterinary Medicine

PLEASE NOTE

Effective August 1, 1989, no student may be enrolled in a Florida state university who has not earned two credits of sequential foreign language at the secondary level or eight semester credits in one foreign language at the postsecondary level. (Rule 6A-10.02412)

ASSOCIATE IN ARTS DEGREE PROGRAMS

NOTICE TO STUDENTS. It is important that you be familiar with complete descriptions of all courses in your program. These descriptions appear in this catalog. Consult the index for individual listings.

GENERAL TRANSFER PROGRAM

This program is appropriate for those students who have not chosen their major field of study but who plan to pursue a four-year degree. It also should be followed by students who have chosen a major field not specifically outlined in the following pages.

FRESHMAN YEAR

<i>Fall</i>		<i>Credits</i>
ENGLISH	ENC 1101 or 1132 ¹	3-4
MATHEMATICS	MAT 1033	3
SOCIAL SCIENCE		3
ELECTIVES		6-7
		<hr/> 15-17
<i>Spring</i>		<i>Credits</i>
ENGLISH	ENC 1102	3
SOCIAL SCIENCE		3
HUMANITIES		
ELECTIVES ²		3
MATHEMATICS	MGF 2202	3
ELECTIVE		3
		<hr/> 15

SOPHOMORE YEAR

<i>Fall</i>		<i>Credits</i>
SOCIAL SCIENCE		3
HUMANITIES	Literature	3
SCIENCE		3
ENGLISH	ENC 1135	3
ELECTIVES		5
		<hr/> 17
<i>Spring</i>		<i>Credits</i>
HUMANITIES	Literature	3
SCIENCE		3
GENERAL EDUCATION		3
ENGLISH ³	Elective	3
ELECTIVES		4
		<hr/> 16

¹Placement dependent upon test results.

²Select from ARH 2050 or ARH 2051, HUM 1020, MUH 2011, or PHI 2010.

³Student may select from CRW 2020, ENC 2210, AMH 2010, AMH 2020, INR 2002, or MMC 2100.

AGRICULTURE TRANSFER PROGRAM

FRESHMAN YEAR

		<i>Credits</i>	
		<i>Fall</i>	<i>Spring</i>
ENC 1101	Composition I ¹	3	
ENC 1102	Composition: Literature		3
BSC 1010C	General Biology	5	
BOT 2010C	General Botany		5
CHM 2045C	College Chemistry I	5	
CHM 2046C	College Chemistry II		5
MAC 1132	Precalculus ²	5	
MGF 2113	Topics in college Mathematics		1
POS 2041	American National Government		3
		<hr/> 18	<hr/> 17

SOPHOMORE YEAR

		<i>Credits</i>	
		<i>Fall</i>	<i>Spring</i>
ENC 1135	Composition: Argumentation	3	
ENGLISH	Elective ³		3
ZOO 2013C	General Zoology	5	
PHY 2053	General Physics I	5	
PHY 2054C	General Physics II		5
HUMANITIES	Literature ⁴	3	3
ECO 2013	Principles of Economics I		3
		<hr/> 16	<hr/> 14

Agriculture is a broad term. This program is designed to provide a general preparation for the many specialized fields available. Contact a counselor for requirements in your particular area of interest and select the most suitable electives available.

¹Student may substitute ENC 1132.

²Student with insufficient background in mathematics or science should consult a college counselor.

³Student may select from CRW 2020, ENC 2210, AMH 2010, AMH 2020, INR 2002, or MMC 2100.

⁴Select two literature courses.

ART OR ART EDUCATION TRANSFER PROGRAM

FRESHMAN YEAR

		<i>Credits</i>	
		<i>Fall</i>	<i>Spring</i>
ENC 1101	College Composition I ¹	3	
ENC 1102	Composition: Literature		3
MAT 1033	Intermediate Algebra	3	
MGF 2202	Finite Mathematics		3
SOCIAL SCIENCE	See listings ²	3	3
ARH 2050	Art History & Appreciation		3
ART 1205C	Design and color	3	
ART 1201C	Design Structures		3
ART 1300	Freehand Drawing	3	
ART 1301	Freehand Drawing		3
		<hr/> 15	<hr/> 18

SOPHOMORE YEAR

SCIENCE	Science ³		3-4
SOCIAL SCIENCE	General Education - See listings ²	3	
HUMANITIES	Literature		3
ARH 2051	Art History & Appreciation	3	
ART 2561	Introduction to Painting		3
ART	ART Electives	3	3
ENC 1135	Composition: Argumentation	3	
ENGLISH	Elective ⁴		3
ELECTIVES	Based on Program Requirements ⁵	3	
		<hr/> 15	<hr/> 15-16

¹Student may substitute ENC 1132.

²Student may select from approved courses. Consult a college counselor and university catalog.

³Student should check degree program: some universities require additional credits in science and/or mathematics.

⁴Student may select from CRW 2020, ENC 2210, AMH 2010, AMH 2020, INR 2002, or MMC 2100.

⁵Electives should include at least one graphics course and at least one crafts course.

BROADCASTING/COMMUNICATIONS TRANSFER PROGRAM

FRESHMAN YEAR

		<i>Credits</i>
ENC 1101	Composition I	3
ENC 1102	Composition: Literature	3
MAT 1033	Intermediate Algebra	3
MGF 2202	Finite Mathematics	3
MMC 2100	Writing For The Mass Media	3
SPC 2016	Fundamentals of Speech	3
RTV 2000	Introduction to Broadcasting	3
ELECTIVE	Social Science	3
ELECTIVE	Humanities	3
ELECTIVE	Science	3
POS 2112	State and Local Government	3

SOPHOMORE YEAR

ENC 1135	Composition: Argumentation	3
ELECTIVE	Literature	3
RTV 2200	Broadcast Production I	3
AMH 2020	American History	3
ECO 2013	Principles of Economics	3
POS 2041	American National Government	3
ELECTIVE	Science	6
ELECTIVE	Social Science	3
CGS 1461C	Computer Programming - BASIC	3
ELECTIVE	General	3
		<hr/> 66

BUSINESS ADMINISTRATION TRANSFER PROGRAM

FRESHMAN YEAR

		<i>Credits</i>	
		<i>Fall</i>	<i>Spring</i>
CGS 1000C	Introduction to Data Processing ¹	3	
ENC 1101	College Composition I ²	3	
ENC 1102	Composition: Literature		3
GEB 1011	Introduction to Business	3	
HUMANITIES	Literature		3
MAC 1132	Precalculus ³	5	
MAC 2311	Calculus ¹		5
PSY 2012	Introduction to Psychology		3
ELECTIVE ¹		<u>3</u>	<u>3</u>
		17	17

SOPHOMORE YEAR

		<i>Credits</i>	
		<i>Fall</i>	<i>Spring</i>
ACG 2001	Principles of Accounting I	4	
ACG 2011	Principles of Accounting II		3
CAP 1801	Lotus 1-2-3		1
ECO 2013	Principles of Economics I	3	
ECO 2023	Principles of Economics II		3
ENC 1135	Composition: Argumentation	3	
HISTORY	History ⁴	3	3
SCIENCE	Science ¹	3	3
STA 2024	Introduction to Statistics		3
		<hr/> 16	<hr/> 16

¹ Some universities may require additional or different credits in mathematics, science, and computer science.

² Student may substitute ENC 1132.

³ Student may be required to take lower mathematics based on college Placement Tests.

⁴ Student may select INR 2002 or AMH 2020 which fulfills an English and history requirement.

Student may waive introductory courses. Consult a college counselor.

COMPUTER SCIENCE TRANSFER PROGRAM

FRESHMAN YEAR

		<i>Credits</i>	
		<i>Fall</i>	<i>Spring</i>
BSC 1010C	General Biology ¹	5	
CGS 1000C	Introduction to Data Processing		3
ENC 1101	College Composition I ²	3	
ENC 1102	Composition: Literature		3
MAC 1132	Precalculus ³	5	
MAC 2311	Calculus ¹		5
PHYS. ED.	Physical Education		1
POS 2041	American National Government	3	
STA 2024	Introduction to Statistics		3
Elective	Computer Elective	<hr/> 1	<hr/>
		17	15

SOPHOMORE YEAR

COP 2200C	Computer Programming - FORTRAN		3
COP 2210C	Computer Programming - PASCAL	3	
ENC 1135	Composition: Argumentation	3	
ENC 2210	Technical Report Writing		3
MAC 2312	Calculus and Analytic Geometry I	5	
MAC 2313	Calculus and Analytic Geometry II		2
PHY 2048C	General Physics with Calculus I	5	
PHY 2049C	General Physics with Calculus II		5
MAC 2316	Differential Equations	<hr/>	<hr/> 3
		16	16

¹Some universities may require different courses in mathematics and science.

²Students may substitute ENC 1132.

³Students with insufficient background in mathematics or science should consult a college counselor.

Student should check with counseling or faculty advisor for specific transfer requirements.

CRIMINOLOGY AND CORRECTIONS TRANSFER PROGRAM

FRESHMAN YEAR

		<i>Credits</i>	
		<i>Fall</i>	<i>Spring</i>
ENC 1101	College Composition I ¹	3	
ENC 1102	Composition: Literature ¹		3
MAT 1033	Intermediate Algebra	3	
SOCIAL SCIENCE	General Education ²	3	3
HUMANITIES	Humanities ³		3
CCJ 1100	Introduction to Criminal Justice	3	
CCJ 1000	Introduction to Criminology		3
MGF 2202	Finite Mathematics	3	
ELECTIVE			2
CJT 2311	Advanced Firearms Training		3
		<hr/> 15	<hr/> 17

SOPHOMORE YEAR

SCIENCE	Science ⁴	3	
SSI 1011	Survey of Social Sciences		3
HUMANITIES	Literature	3	3
CJT 2100	Introduction to Criminal Investigation	3	
CCJ 2600	Criminal Deviant Behavior		3
CCJ 2310	Introduction to Corrections	3	
CCJ 2230	Criminal Procedures & Evidence		3
ENC 1135	Composition: Argumentation	3	
ENGLISH	Elective ⁵		3
ELECTIVES		<hr/> 2	
		17	<hr/> 15

¹Student may substitute ENC 1132.

²Student may select from approved courses. Consult a college counselor.

³Select from ARH 2050 or ARH 2051, HUM 1020, MUH 2011, or PHI 2010.

⁴Some universities may require additional credits in science and or foreign language. Consult a college counselor.

⁵Student may select from CRW 2020, ENC 2210, AMH 2010, AMH 2020, INR 2002, or MMC 2100.

EDUCATION TRANSFER PROGRAM

FRESHMAN YEAR

		<i>Credits</i>	
		<i>Fall</i>	<i>Spring</i>
ENC 1101	College Composition I ¹	3	
ENC 1102	Composition: Literature		3
MAT 1033	Intermediate Algebra	3	
SOCIAL SCIENCE	General Education ²	3	3
HUMANITIES	Humanities ³		3
PHYS. ED.	Physical Education	1	1
PSY 2012	Introduction to Psychology	3	
SPC 2016	Fundamentals of Speech		3
ELECTIVES	Teaching Field	3	
MGF 2202	Finite Mathematics		3
		<hr/> 16	<hr/> 16

SOPHOMORE YEAR

SCIENCE	Science ⁴	3	3
SOCIAL SCIENCE	General Education ²	3	
HUMANITIES	Literature	3	3
PSYCHOLOGY	Psychology		3
ENC 1135	Composition: Argumentation	3	
ELECTIVES	Elective ⁵	4	4
EDF 2005	Introduction to Education		3
		<hr/> 16	<hr/> 16

¹Student may substitute ENC 1132.

²Student may select from approved courses. Consult a college counselor.

³Select from ARH 2050, or ARH 2051, HUM 1020, MUH 2011, or PHI 2010.

⁴Some universities require 10 semester hours of science, including work in both physical and biological science.

⁵Student may select from CRW 2020, ENC 2210, AMH 2020, INR 2002, or MMC 2100.

ENGINEERING TRANSFER PROGRAM

SUMMER TERM

ENC —	English
MAC —	Mathematics
CHM 1025C	Introductory General Chemistry

These summer courses are recommended if placement examinations indicate a lack of preparation for MAC 1132 and either ENC 1132 or ENC 1101 or if the prerequisites for CHM 2045C have not been met.

FRESHMAN YEAR

		<i>Credits</i>	
		<i>Fall</i>	<i>Spring</i>
CHM 2045C	College Chemistry I	5	
CHM 2046C	College Chemistry II		5
EGN 1120C	Engineering Graphics	3	
POS 2041	American National Government		3
ENC 1101	College Composition I	3	
ENC 1102	Composition: Literature ¹		3
MAC 1132	Precalculus ²	5	
MAC 2311	Calculus		5
		<hr/> 16	<hr/> 16

SUMMER TERM

ECO 2013	Principles of Economics I	3
ENC 2210	Technical Report Writing	<hr/> 3
		6

SOPHOMORE YEAR

EGN 2312	Vector Mechanics-Statics	3	
EGN 2323	Vector Mechanics-Dynamics		3
COP 2200C	Computer Programming-FORTRAN		3
AMH 2010	U.S. History to 1877	3	
MAC 2312	Calculus and Analytic Geometry I	5	
MAC 2313	Calculus and Analytic Geometry II		2
MAC 2316	Differential Equations		3
PHY 2048C	General Physics with Calculus I	5	
PHY 2049C	General Physics with Calculus II		5
		<hr/> 16	<hr/> 16

¹Student may substitute ENC 1132.

²Student with insufficient background in mathematics or science should consult a college counselor.

JOURNALISM TRANSFER PROGRAM

FRESHMAN YEAR

		<i>Credits</i>	
		<i>Fall</i>	<i>Spring</i>
ENC 1101	Composition I ¹	3	
ENC 1102	Composition: Literature		3
MAT 1033	Intermediate Algebra	3	
MGF 2202	Finite Mathematics		3
MMC 2100	Writing for Mass Media	3	
HUMANITIES	Humanities ²		3
SCIENCE	Science ³	3	3
OST 1191C	Personal Typing	3	
ELECTIVES	Electives ⁴	<hr/> 1	<hr/> 4
		16	16

SOPHOMORE YEAR

ENC 1135	Composition: Argumentation	3	
AMH 2020	American History		3
ECO 2013	Principles of Economics I	3	
HUMANITIES	Literature		3
POS 2041	American National Government	3	
CGS 1461C	Computer Programming - BASIC		3
SPC 2016	Fundamentals of Speech	3	
ELECTIVES ⁴		<u>4</u>	<u>7</u>
		16	16

¹Student may substitute ENC 1132.

²Select from ARH 2050 or ARH 2051, HUM 1020, MUH 2011, or PHI 2010.

³Some universities require additional hours. Consult a college counselor.

⁴Prerequisites of some universities should be selected as electives.

MEDICINE AND DENTISTRY TRANSFER PROGRAM

FRESHMAN YEAR

		<i>Credits</i>	
		<i>Fall</i>	<i>Spring</i>
ENC 1101	Composition I ¹	3	
ENC 1102	Composition: Literature		3
CHM 2045C	College Chemistry I	5	
CHM 2046C	College Chemistry II		5
MAC 1132	Precalculus ²	5	
MAC 2311	Calculus		5
POS 2041	American National Government	3	
BSC 1010C	General Biology		5
		<u>16</u>	<u>18</u>

SOPHOMORE YEAR

ENC 1135	Composition: Argumentation		3
MCB 2010C	Microbiology		5
ZOO 2013C	General Zoology	5	
PHY 2053C	General Physics I	5	
PHY 2054C	General Physics II		5
HUMANITIES	Literature	3	3
ENGLISH	Elective ³	<u>3</u>	<u>1</u>
		16	17

¹Student may substitute ENC 1132.

²Student with insufficient background in mathematics or science should consult a college counselor.

³Student may select from CRW 2020, ENC 2210, AMH 2010, AMH 2020, INR 2002, or MMC 2100.

MUSIC TRANSFER PROGRAM

FRESHMAN YEAR

		<i>Credits</i>	
		<i>Fall</i>	<i>Spring</i>
ENC 1101	Composition I ¹	3	
ENC 1102	Composition: Literature		3
SOCIAL SCIENCE	General Education ²	3	
MAT 1033	Intermediate Algebra		3
MUT 1111	Basic Theory I	4	
MUT 1112	Basic Theory II		4
APPLIED MUSIC	Secondary Instrument	1	1
APPLIED MUSIC	Principal Instrument	2	2
PSY 2012	Introduction to Psychology	3	
MUSIC	Music Organizations	1	1
ELECTIVES	Music or Humanities		2
		<hr/> 17	<hr/> 16

SUMMER TERM

MGF 2202	Finite Mathematics	3	
	Applied Music Principal Instrument	<hr/> 2	
		5	

SOPHOMORE YEAR

ENC 1135	Composition: Argumentation	3	
ENGLISH	Elective ³		3
SCIENCE	Electives	3	3
MUL 2211	Survey of Music Literature		3
APPLIED MUSIC	Secondary Instrument	1	1
APPLIED MUSIC	Principal Instrument	2	
MUSIC	Music Organizations	1	2
MUL 2116	Music Theory III	4	
MUT 2117	Music Theory IV		4
ELECTIVES		<hr/> 2	<hr/>
		16	16

¹Student may substitute ENC 1132.

²Student may select from approved courses.

³Student may select from CRW 2020, ENC 2210, MMC 2100, INR 2002, AMH 2010, or AMH 2020.

NURSING TRANSFER PROGRAM

FRESHMAN YEAR

		<i>Credits</i>	
		<i>Fall</i>	<i>Spring</i>
ENC 1101	College Composition I ¹	3	
ENC 1102	Composition: Literature		3
CHM 1025C	General Chemistry	5	
PSY 2012	Introduction to Psychology	3	
DEP 2004	Psychology of Human Development		3
MAT 1033	Intermediate Algebra	3	
MGF 2202	Finite Mathematics		3
HISTORY	History ²	3	
CHM 1205C	General Organic & Biochemistry		5
		<hr/> 17	<hr/> 14

SUMMER TERM

BSC 1010C	General Biology	5
-----------	-----------------	---

SOPHOMORE YEAR

ENC 1135	Composition: Argumentation	3	
ENGLISH	Elective ³	3	
POS 2041	American National Government	3	
APB 2203C	Human Anatomy & Physiology I	5	
APB 2204C	Human Anatomy & Physiology II		5
MCB 2010C	Microbiology		5
SYG 2000	Introduction to Sociology		3
HUMANITIES	Literature ⁴	3	3
		<hr/> 17	<hr/> 16

¹Student may substitute ENC 1132.

²Student may select from approved courses. Consult a college counselor.

³Student may select from CRW 2020, ENC 2210, AMH 2010, AMH 2020, INR 2002, or MMC 2100.

⁴Select two literature courses: ENL 2012-2022, LIT 2110-2120, or AML 2010-2022.

OCCUPATIONAL THERAPY TRANSFER PROGRAM

FRESHMAN YEAR

		<i>Credits</i>	
		<i>Fall</i>	<i>Spring</i>
ENC 1101	College Composition I ¹	3	
ENC 1102	Composition: Literature		3
MAT 1033	Intermediate Algebra	3	
HISTORY	History ²	3	3
HUMANITIES	Humanities ³		3
BSC 1010C	General Biology		5
PHYS. ED.	Physical Education	1	1
ART 2110	Introduction to Ceramics		3
CHM 1020	Environmental Chemistry	3	
PSY 2012	Introduction to Psychology	3	
		<hr/> 16	<hr/> 18

SOPHOMORE YEAR

APB 2203C	Human Anatomy & Physiology I	5	
APB 2204C	Human Anatomy & Physiology II		5
POS 2041	American National Government	3	
HUMANITIES	Literature ⁴	3	3
DEP 2002	Psych. of Child Development		3
MGF 2202	Finite Mathematics	3	
ENC 1135	Composition: Argumentation	3	
ENGLISH	Elective		3
		<hr/> 17	<hr/> 14

¹Student may substitute ENC 1132.

²Student will select from EUH 1012, EUH 1022, AMH 2010, or AMH 2020.

³Select from ARH 2050; HUM 1020, MUH 2011, or PHI 2010.

⁴Select two literature courses: ENL 2012-2022, AML 2010-2022, or LIT 2110-2120.

OPTOMETRY TRANSFER PROGRAM

FRESHMAN YEAR

		<i>Credits</i>	
		<i>Fall</i>	<i>Spring</i>
ENC 1101	College Composition I ¹	3	
ENC 1102	Composition: Literature		3
MAC 1132	Precalculus ²	5	
MAC 2311	Calculus		5
CHM 2045C	College Chemistry I	5	
CHM 2046C	College Chemistry II		5
POS 2041	American National Government		3
ELECTIVE ³		<hr/> 3	
		16	16

SUMMER TERM

BSC 1010C	General Biology	5
-----------	-----------------	---

SOPHOMORE YEAR

ZOO 2013C	General Zoology	5	
MCB 2010C	Microbiology		5
PHY 2053C	General Physics I	5	
PHY 2054C	General Physics II		5
HUMANITIES	Literature	3	3
ENC 1135	Composition: Argumentation	3	
ENGLISH	Elective ⁴		3
		<hr/> 16	<hr/> 16

¹Student may substitute ENC 1132.

²Students with insufficient background in mathematics or science should consult a college counselor.

³Electives should be selected on the basis of the university to be attended.

⁴Student may select from CRW 2020, ENC 2210, AMH 2010, AMH 2020, INR 2002, or MMC 2100.

PHARMACY TRANSFER PROGRAM

FRESHMAN YEAR

		<i>Credits</i>	
		<i>Fall</i>	<i>Spring</i>
ENC 1101	College Composition I ¹	3	
ENC 1102	Composition: Literature		3
MAC 1132	Precalculus ²	5	
MAC 2311	Calculus		5
CHM 2045C	College Chemistry I	5	
CHM 2046C	College Chemistry II		5
BSC 1010C	General Biology		5
		<hr/>	<hr/>
		13	18

SOPHOMORE YEAR

POS 2041	American National Government		3
ZOO 2013C	General Zoology	5	
PHY 2053C	General Physics I	5	
PHY 2054C	General Physics II		5
HUMANITIES	Literature ³	3	3
ELECTIVE			3
ENC 1135	Composition: Argumentation	3	
ENGLISH	Elective ⁴		3
		<hr/>	<hr/>
		16	17

¹Student may substitute ENC 1132.

²Students with insufficient background in mathematics or science should consult a college counselor.

³Select two literature courses: ENL 2012-2022, AML 2010-2022 or LIT 2110-2120.

⁴Student may select from CRW 2020, ENC 2210, AMH 2020, INR 2002, or MMC 2100.

PHYSICAL THERAPY TRANSFER PROGRAM

FRESHMAN YEAR

		<i>Credits</i>	
		<i>Fall</i>	<i>Spring</i>
ENC 1101	College Composition I ¹	3	
ENC 1102	Composition: Literature		3
MAC 1132	Precalculus ²	5	
CHM 2045C	College Chemistry I	5	
CHM 2046C	College Chemistry II		5
POS 2041	American National Government	3	
BSC 1010C	General Biology		5
PHYS. ED.	Physical Education	1	
MGF 2113	Topics in college Mathematics		1
PSY 2012	Introduction to Psychology		3
		<hr/>	<hr/>
		17	17

SOPHOMORE YEAR

ENC 1135	Composition: Argumentation	3	
DEP 2002	Psychology of Child Development		3
ZOO 2013C	General Zoology	5	
PHY 2053C	General Physics I	5	
PHY 2054C	General Physics II		5
HUMANITIES	Literature	3	3
ENGLISH	Elective ³		3
		<hr/>	<hr/>
		16	14

¹Student may substitute ENC 1132.

²Student with insufficient background in mathematics or science consult a college counselor.

³Student may select from CRW 2020, ENC 2210, AMH 2010, AMH 2020, INR 2002, or MMC 2100.

POLICE ADMINISTRATION TRANSFER PROGRAM

FRESHMAN YEAR

		<i>Credits</i>	
		<i>Fall</i>	<i>Spring</i>
ENC 1101	College Composition I ¹	3	
ENC 1102	Composition: Literature		3
MAT 1033	Intermediate Algebra	3	
SOCIAL SCIENCE	General Education ²	3	3
HUMANITIES	Humanities ³		3
CCJ 1100	Introduction to Criminal Justice	3	
CCJ 1400	Police Organization & Administration		3
MGF 2202	Finite Mathematics		3
ELECTIVE		3	
CJT 2311	Advanced Firearms Training		3
		<hr/>	<hr/>
		15	18

SOPHOMORE YEAR

SCIENCE	Science ⁴	3	
ISS 1011	Survey of Social Sciences		3
HUMANITIES	Literature	3	3
CJT 2100	Introduction to Criminal Investigation	3	
CCJ 2600	Criminal Deviant Behavior		3
CCJ 2220	Criminal Law	3	
CCJ 2230	Criminal Procedures & Evidence		3
ENC 1135	Composition: Argumentation	3	
ENGLISH	Elective ⁵		3
ELECTIVE		1	
		<hr/>	<hr/>
		16	15

¹Student may substitute ENC 1132.

²Student may select from approved courses. Consult a college counselor.

³Select from ARH 2050 or ARH 2051, HUM 1020, MUH 2011, or PHI 2010.

⁴Some universities may require additional credits in science and/or foreign language. Consult a college counselor.

⁵Student may select from CRW 2020, ENC 2210, AMH 2010, AMH 2020, INR 2002, or MMC 2100.

SOCIAL SCIENCE TRANSFER PROGRAM

This program is designed to provide the student with a broad interdisciplinary background spanning the traditional social sciences. Such a program will provide a foundation for a comprehensive social science major or for a specialization within a specific academic area (i.e. economics, history, political science, psychology, sociology, etc.).

FRESHMAN YEAR

		<i>Credits</i>	
		<i>Fall</i>	<i>Spring</i>
ENC 1101	College Composition I ¹	3	
ENC 1102	Composition: Literature		3
EUH 1000	Western Civilization I	3	
EUH 1001	Western Civilization II		3
POS 2041	American National Government		3
MAT 1033	Intermediate Algebra	3	
SYG 2000	Introduction to Sociology	3	
PSY 2012	Introduction to Psychology		3
MGF 2202	Finite Mathematics	3	3
ELECTIVES ²			3
		<hr/> 15	<hr/> 18

SOPHOMORE YEAR

ENC 1135	Composition: Argumentation	3	
HUMANITIES	Elective ³		3
HUMANITIES	Literature ⁴	3	
ECO 2013	Principles of Economics I	3	
ECO 2023	Principles of Economics II		3
AMH 2010	U. S. History I	3	
AMH 2020	U. S. History II		3
SCIENCE ⁵		3-4	3-4
ELECTIVE ⁶			3
		<hr/> 15-16	<hr/> 15-16

¹Student may substitute ENC 1132.

²Suggested courses might include ANT 2410, ECO 2000 for Fall Term and SYG 2410, SYG 2020 for Spring Term.

³Suggested courses might include HUM 1020, PHI 2010.

⁴Check college catalog for AML, ENL and LIT course preferences.

⁵Check college catalog in biology, chemistry, and physics for course preferences.

⁶Student may select from INR 2002 or DEP 2004 for Fall Term and POS 2112 for Spring Term.

VETERINARY MEDICINE TRANSFER PROGRAM

FRESHMAN YEAR

		<i>Credits</i>	
		<i>Fall</i>	<i>Spring</i>
ENC 1101	College Composition I ¹	3	
ENC 1102	Composition: Literature		3
BSC 1010C	General Biology	5	
CHM 2045C	College Chemistry I	5	
CHM 2046C	College Chemistry II		5
MAC 1132	Precalculus ²	5	
MAC 2311	Calculus		5
POS 2041	American National Government		3
		<hr/> 18	<hr/> 16

SOPHOMORE YEAR

ZOO 2013C	General Zoology	5	
PHY 2053C	General Physics I	5	
PHY 2054C	General Physics II		5
HUMANITIES	Literature	3	3
BOT 2010C	General Botany		5
ELECTIVE	Social Science		3
ENC 1135	Composition: Argumentation	3	
ENGLISH	Elective ³		3
		<hr/> 16	<hr/> 19

¹Students may substitute ENC 1132.

²Students with insufficient background in mathematics or science should consult a college counselor.

³Student may select from CRW 2020, ENC 2210, AMH 2010, AMH 2020, INR 2002 or MMC 2100.

ASSOCIATE IN SCIENCE DEGREE PROGRAMS

The following Associate in Science (A.S.) degree programs, containing college credit offerings of a specialized nature, are designed primarily for employment opportunity. The inclusion of some course work in non-specialized areas should make it possible for students to acquire a foundation in general education. Students are not required to satisfy the State of Florida "General Education" requirements, but are encouraged to include as many of these courses as possible.

Some universities will accept credits from these programs, allowing the student to transfer credits and pursue a Bachelor's degree. Anyone completing one of these programs and satisfying the requirements for graduation will be eligible to receive the Associate in Science degree.

NOTICE TO STUDENTS. It is important that you be familiar with complete descriptions of courses in your program. These descriptions appear in this catalog. Consult the index for individual listings.

BANKING

This program is offered in cooperation with the American Institute of Banking program under the auspices of the Lake-Sumter Counties Chapter, American Institute of Banking Section, American Bankers' Association. A student completing this banking program and satisfying requirements for graduation will be awarded an Associate in Science degree and can further earn American Institute of Banking diplomas.

GENERAL COURSES

		<i>Credits</i>
ACG 2001	Principles of Accounting I	4
BAN 1004	Principles of Bank Operations	3
BAN 2501	Money & Banking	3
BAN 1800	Law & Banking: Principles	3
CGS 1000C	Introduction to Data Processing	3
ECO 2013	Principles of Economics I	3
MNA 1100	Human Relations in Business & Industry	3
QMB 1001	Business Mathematics	3
QMB 2100	Business Statistics	3
OST 1191C	Personal Typewriting	3
OST 1330	Business English ¹	3
SPC 2016	Fundamentals of Speech	3
MNA 2021	Principles of Management	3
		<hr/> 40

Select twenty-five (25) credits from the following:

		<i>Credits</i>
BAN 1161	Corporate Securities Services	3
BAN 1252	Real Estate Finance	3
BAN 1405	Trust Operations	3
BAN 1413	Securities Processing	3
BAN 1511	Marketing for Bankers	3
BAN 1741	Management Fundamentals	3
BAN 1801	Law and Banking: Applications	3
BAN 2210	Analyzing Financial Statements	3
BAN 2231	Commercial Lending	3
BAN 2240	Consumer Lending	3
BAN 2400	Trust Business	3
BAN 2411	Savings and Time Deposit Banking	3
BAN 2724	Retail Banking Series	3
BAN 2742	Commercial Bank Management	3
BAN 2782	Bank Investments and Funds Management	3
BRC 2949	Cooperative Education Internship ²	3
CAP 1801	Lotus 1-2-3	1
CGS 1510C	Lotus 1-2-3 (3 credit course)	3

¹ Students may be required to enroll in lower English and reading courses based on college placement tests.

² Cooperative Educational Internship is limited to 3-credit hours in the program.

Student may waive introductory courses. See a College counselor.

This is an Associate in Science curriculum and some courses may not be transferable to an Associate in Arts program. See Academic Advisor.

COMPUTER SCIENCE

The Computer Science program is structured to provide students with knowledge of the primary aspects of the computer, computer design, programming capacities, and problem-solving capabilities. Computer science is concerned with "software" or program design, programming, application of computer systems, and systems analysis.

FRESHMAN YEAR

		<i>Fall</i>	<i>Credits</i>	<i>Spring</i>
CGS 1000C	Introduction to Data Processing	3		
MTB 1321	Applied Technical Mathematics I	4		
MTB 1322	Applied Technical Mathematics II			4
ENC 1101	College Composition I ¹			3
COP 1000C	Programming Logic Concepts	3		
COP 2170C	Computer Programming - Advanced			
	BASIC			3
COP 2160C	Computer Programming - RPG			3
MNA 1100	Human Relations in Business and			
	Industry	3		
CET 2112C	Digital Electronics			4
OST 1141C	Keyboarding on Microcomputers	1		
		<hr/> 14		<hr/> 17

SUMMER TERM

ENC 2210	Technical Report Writing	<u>3</u>	
		3	

SOPHOMORE YEAR

COP 2120C	Computer Programming - COBOL I	3	
COP 2121C	Computer Programming - COBOL II		3
ACG 2001	Principles of Accounting I ³	4	
ACG 2011	Principles of Accounting II		3
CIS 2321C	Systems Analysis and Design	3	
COP 2210C	Computer Programming - PASCAL	3	
COP 2401C	Computer Programming - Assembly Language		3
PHY 1001	Technical Physics	5	
QMB 2100	Business Statistics		3
Electives ²		<u>3</u>	<u>3</u>
		18	15

¹Student may substitute ENC 1132.

²Student may select from approved computer programming courses.

³Student may be requested to transfer to basic accounting class.

Student may waive introductory courses. See Academic Advisor.

Minimum hours in program is 64 hours.

CRIMINAL JUSTICE

This program is designed for in-service criminal justice personnel who are seeking an Associate in Science Degree in Criminal Justice. Students who plan to pursue a Bachelors degree must enroll in courses listed in the Transfer Program.

FRESHMAN YEAR

		<i>Credits</i>
CCJ 1000	Introduction to Criminology	3
CCJ 1100	Introduction to Criminal Justice	3
CCJ 2200	Criminal Law	3
CCJ 2310	Introduction to Corrections	3
CJT 2100	Introduction to Criminal Investigation	3
ENC 1101	College Composition I ¹	3
CJT 2311	Advanced Firearms Training	3
Electives		<u>8</u>
		29

SUMMER TERM

CJT 2110	Advanced Criminal Investigation	3	
CCJ 1800	Introduction to Security	<u>3</u>	
		6	

SOPHOMORE YEAR

CCJ 1400	Police Organization & Administration	Credits
CCJ 2230	Criminal Procedure & Evidence	3
CCJ 2500	Juvenile Delinquency	3
CCJ 2600	Criminal Deviant Behavior	3
ENC 2210	Technical Report Writing	3
or		
ENC 1102	Composition Literature	
ISS 1011	Introduction to the Social Sciences	3
MAT 0002	Introduction to Algebra	3
ELECTIVES		8
		<hr/> 29

¹Student may substitute ENC 1132.

DATA PROCESSING

The Data Processing program is designed to prepare a person for employment as a peripheral equipment operator, data typist, programmer, computer program operator with general office skills or to provide supplemental training for a person previously or currently employed in these occupations.

FRESHMAN YEAR

		Credits	
		Fall	Spring
OST 1330	Business English ¹	3	
CGS 1000C	Introduction to Data Processing	3	
COP 1000C	Programming Logic Concepts	3	
MNA 1100	Human Relations in Business and Industry	3	
OST 1191C	Personal Typewriting	3	
BUL 2111	Business Law		3
OST 2325C	Business Machines and Filing		3
GEB 1011	Introduction to Business		3
QMB 1001	Business Mathematics ²		3
COP 2170C	Computer Programming - Advanced BASIC ³	<hr/> 15	<hr/> 3
			15

SUMMER TERM

OST 2336	Business Communications	3
Elective ⁴		<hr/> 3
		6

SOPHOMORE YEAR

COP 2120C	Computer Programming - COBOL I	3	
COP 2121C	Computer Programming - COBOL II		3
ACG 2001	Principles of Accounting I ³	4	
ACG 2011	Principles of Accounting II		3
ECO 2000	Introduction to Economics*	3	
OST 2711C	Word Processing I	3	
COP 2160C	Computer Programming - RPG		3
Electives ⁴		3	
QMB 2100	Business Statistics		3
CAP 1801	Lotus 1-2-3		1
		16	13

¹ Student may be required to enroll in lower English and reading courses based on college placement tests.

² Student may be required to take a higher or lower mathematics course based on college placement tests.

³ Student may be requested to transfer to basic accounting class.

⁴ Student may select from approved computer programming courses.

⁵ Student may need to take CGS 1461C, if no previous programming. Course will not count toward degree.

Student may waive introductory courses. See Academic Advisor.

Minimum hours in program is 64 hours.

* Student may substitute ECO 2013, Principles of Economics I.

ELECTRONICS ENGINEERING TECHNOLOGY

The Digital Electronics Engineering Technology program is a two-year technical program leading to an Associate in Science Degree. It is designed to give students the opportunity to develop a strong background in electronics with emphasis on digital electronics and modern technology. Areas of employment for electronic technicians include communications, computers, electro-mechanical systems, manufacturing sales, education, servicing, medicine, controls, and research.

FRESHMAN YEAR

		<i>Credits</i>	
		<i>Fall</i>	<i>Spring</i>
CGS 1000C	Introduction to Data Processing	3	
ENC 1101	College Composition I ¹	3	
CET 2112C	Digital Electronics		4
EGN 1120C	Engineering Graphics		3
EET 1015C	Fundamentals of DC Circuits	4	
EET 1025C	Fundamentals of AC Circuits		4
MTB 1321	Applied Technical Mathematics I	4	
MTB 1322	Applied Technical Mathematics II		4
		14	15

SUMMER TERM

ETD 2621C	Electronic Drafting	3
EET 1141C	Electronic Devices	3
ENC 1102	Composition: Literature ²	3
		6-9

SOPHOMORE YEAR

COP 2200C	Computer Programming - FORTRAN		3
EET 2142C	Electronic Circuits	5	
CET 2122C	Introduction to Microprocessors	4	
ENC 2210	Technical Report Writing		3
EET 2154C	Microelectronic Circuits		4
CET 2131C	Microcomputer Systems		5
PHY 1001	Technical Physics	5	
ENC 1135	Composition: Argumentation ²	3	
		<hr/> 14-17	<hr/> 15

¹Students may substitute ENC 1132.

²Only required for students planning to transfer to a 4-year school.

GRAPHIC DESIGN

The curriculum in Graphic Design prepares a student for employment where art is used as an important part of a business. The courses are structured to provide creative development with technical knowledge and skills for the person who desires employment in the areas of advertising design, letterhead design, illustration, and creative art directing. Working independently as a freelance artist is also a possibility. Graduates may continue at some universities to obtain baccalaureate degrees in this field.

FRESHMAN YEAR

		<i>Credits</i>	
		<i>Fall</i>	<i>Spring</i>
ENC 1101	College Composition I ¹	3	
ART 1205	Design and Color	3	
ART 1300	Freehand Drawing I	3	
ART 1230	Introduction to Graphic Design	3	
ART 2540	Introduction to Painting, Watercolor I	3	
ELECTIVE ²			3
ART 1201C	Design Structures		3
ART 1301C	Freehand Drawing II		3
ART 1231C	Layout Production I		3
ARH 2050	Art History and Appreciation		3
		<hr/> 15	<hr/> 15

SUMMER TERM

ART 2254	Illustration: Human Figure	3
ART 2551	Airbrush Techniques	3
		<hr/> 6

SOPHOMORE YEAR

ART 2051	Art History and Appreciation	3	
ART 1600C	Basic Photography	3	
ART 2232	Advertising Design I	3	
ART 2234C	Layout Production II	3	
ART 2281	Typographic Letter Forms	3	
ART 2233C	Experimental Design: Portfolio		3
ART 2253	Illustration		3
ART 2235C	Advertising Design II		3
ART 2541C or	Beginning Oil Painting		3
ART 2601	Creative Photography		
		15	12

¹Student may substitute ENC 1132.

² Select from ENC 1102, CGS 1461C, PSY 2012 or Computer Arts Courses.

HUMAN SERVICES

The Human Services program is designed for persons seeking employment as para-professionals in the fields of education or social work. The program offers specialization in gerontology and education with the opportunity to earn on-the-job college credits for practicum in nursing homes, hospitals, or schools.

FRESHMAN YEAR

		<i>Credits</i>	
		<i>Fall</i>	<i>Spring</i>
ENC 1101 or 1132	Composition ¹	3-4	
HUM 1020	Intro. to Humanities		3
PSY 2012	Intro. to Psychology	3	
QMB 1001	Business Mathematics ²		3
SYG 2000	Intro. to Sociology	3	
BSC 1010C	General Biology		5
ARE 2040 or	Art. Experiences or		
ART 1100	Crafts Media	3	
SPC 2016	Fund. of Speech	3	
EDG 2949 or			
SYG 2949	Co-Op ²		3
Electives	In area of specialization*		3
		15-16	17

SUMMER TERM

DEP 2004	Human Development	3
----------	-------------------	---

SOPHOMORE YEAR

ENC 1102	Composition	3	
APA 1002	Small Business Accounting	3	
HUN 1201	Basic Normal Nutrition	3	
HES 2400	First Aid/Personal Safety		3
MUT 2001	Fund. of Music Theory		3
EDG 2949 or			
SYG 2949	Co-Op ³		3
Electives	In area of specialization*	6	6
		15	15

¹ Two composition courses must be taken in sequence. Placement testing will determine the specific courses required for each student.

² Students are encouraged to substitute MAT 1033.

³ EDG 2949 - Teacher Assistants or /SYG 2949 - Gerontology - Social Worker

*Specializations

Teacher Assistants

EDF 2003	Intro. to Education	3
LIT 2090	Contemp. Lit: Fiction	3
DEP 2002	Psychology of Child Development	3
DEP 2201	Psychology of Exceptional Children	3
OST 1191C	Personal Typing	3
		15

Gerontology Aides

GEY 2000	Introduction to Gerontology	3
SYG 2410	Marriage and Family	3
SYG 2949	Co-Op	3
NSP 2290	Understanding Stress and Crisis	3
NSP 1100	Ethical Considerations in Health Care	1
NSP 1511	Health Care Perspectives for Older Adults	1
NSP 2251	Dealing with Death	1
		15

Students are encouraged to take courses of higher difficulty level in place of required courses wherever possible. See program advisor for permission.

If testing indicates the need for remediation before courses are taken, student may be required to take any or all of the following courses:

- ENC 0001 - Basic Composition Skills
- REA 0001 - College Prep Reading
- ENC 0003 - Study Skills

BUSINESS ADMINISTRATION AND MANAGEMENT

The purpose of this program is to provide basic knowledge and skills necessary for students seeking employment in various management fields and for those presently employed in some business career and desiring advancement. The program provides basic education in business with specialization courses in retailing/wholesaling/sales, technical/industrial, hotel/restaurant/institutional, child-care management, and Postal Management.

FRESHMAN YEAR

		<i>Credits</i>	
		<i>Fall</i>	<i>Spring</i>
OST 1330	Business English ¹	3	
ENC 1101 (or 1132)	College Composition I (or Composition Skills)		3 (4)
CIS 1400C	Introduction to Computer Operations	3	
GEB 1011	Introduction to Business	3	
MAR 1011	Principles of Marketing		3
QMB 1001	Business Mathematics ¹		3
OST 1191C	Personal Typewriting	3	
MNA 1100	Human Relations in Business and Industry	3	
MNA 2021	Principles of Management		3
ELECTIVE	Specialization Area ²		3
		<hr/> 15	<hr/> 15-16

SUMMER TERM

OST 2325C	Business Machines and Filing	3
Elective	Specialization Area ²	<hr/> 3
		6

SOPHOMORE YEAR

ACG 2001	Principles of Accounting I ³	4	
BUL 2111	Business Law		3
MNA 2800	Small Business Management	3	
ECO 2000	Introduction to Economics	3	
OST 2336	Business Communications		3
QMB 2100	Business Statistics		3
CAP 1801	Lotus 1-2-3 ⁴		1
CSS 1541C	dBase III		1
CGS 2511C	Advanced Lotus 1-2-3 ⁴		1
Electives	Specialization Area ²	<hr/> 3	<hr/> 3
		13	15

¹Student may be required to enroll in lower English, math, and reading courses based on college placement tests.

²Student may select from approved business/computer courses.

³Student may be requested to transfer to basic accounting class.

⁴Student may substitute CGS 1510.

Specialization is not required. Select 12 hours of business/computer elective hours.

Student may waive introductory courses. See Academic Advisor.

Student limited to 3-credit hours in Cooperative Education Internship.

SPECIALTY OPTION ELECTIVES

Retailing/Wholesaling/Sales

*Principles of Retailing	3
*Salesmanship	3
*Advertising	3
Cooperative Education	3
Internship	
Principles of Accounting	
II	3
Computer Programming	3
— COBOL I	
Fundamentals of Speech	3
Introduction to	3
Data Processing	

Child Care

*Introduction to	3
Psychology	
*Introduction to	3
Education	
*Psychology of Child	3
Development	
Cooperative Education	3
Internship	
Fundamentals of Speech	3
Principles of Accounting	3
II	
Computer Programming	3
— COBOL I	
Introduction to	3
Data Processing	

Postal Management

*Introduction to Postal Management	3
*Customer Services - Postal Management	3
*Delivery Services - Postal Management	3
Fundamentals of Speech	3
Technical Report Writing	3
Computer Programming - BASIC	3
Computer Programming - COBOL I	3
Cooperative Education Internship	3
Introduction to Data Processing	3

Technical/Industrial

*Engineering Graphics	3
*Principles of Accounting	3
II	
*Technical Report	3
Writing	
Cooperative Education	3
Internship	
Computer Programming	3
— COBOL I	
Introduction to	4
Microprocessors	
Fundamentals of Speech	3
Introduction to	
Data Processing	3

Hotel/Restaurant/ Institutional

*Survey of Hotel/	3
Restaurant/	
Institutional	
Management	
*Salesmanship	3
*Advertising	3
Cooperative Education	3
Internship	
Fundamentals of Speech	3
Principles of Accounting	3
II	
Computer Programming	3
— COBOL I	
Introduction to	3
Data Processing	

Courses marked with an asterisk (*) are required courses in the specialization area.

NURSING

Lake-Sumter Community College offers an Associate in Science Degree in Nursing. A special track for Licensed Practical Nurses is also offered beginning each year in May. General Nursing students complete 81 credits and are eligible to write the National Council Licensing Examination for licensure as a Registered Nurse. Licensed Practical Nurses must complete 64 credits to be eligible to write the licensure exam for Registered Nurses.

Admission to the Nursing Program is limited by the size of clinical facilities and number of faculty. **Please see page 26 for the Admission Requirements to the Nursing Program.**

GENERAL EDUCATION REQUIREMENTS

		<i>Credits</i>
APB 2203C	Human Anatomy and Physiology I	5
APB 2204C	Human Anatomy and Physiology II	5
MCB 2010C	Microbiology	5
DEP 2004	Psychology of Human Development	3
ENC 1101 or	College Composition I	
ENC 1132	Composition Skills	3
ENC 1102	Composition: Literature	3
HUN 1201	Basic Normal Nutrition	3
PSY 2012	Introduction to Psychology	3
*NUR 1141	Introduction to Pharmacology	2

NURSING COURSES

		<i>Credits</i>
*NUR 1022	Nursing Theory I	4
*NUR 1210C	Clinical Practice I	5
*NUR 1023	Nursing Theory II	4
*NUR 2211C	Clinical Practice II	5
NUR 2600C	Family Health	2
**NUR 2003	Nursing Transition	6
NUR 2700	Nursing Theory III	5
NUR 2700L	Clinical Practice III	6
NUR 2801	Nursing Leadership	2
NUR 2412	Nursing Theory IV	2
NUR 2500	Nursing Theory V	3
NUR 2512L	Clinical Practice IV	6
NUR 2800L	Clinical Practicum	4

* These courses are not taken by students in the LPN track.

**This course is not taken by general nursing students, but only those students in the LPN track.

GENERAL NURSING CURRICULUM

Prerequisites		<i>Credits</i>
Spring Term		
APB 2203 C	Human Anatomy and Physiology I	5
*ENC 1101	College Composition I	3
PSY 2012	Introduction to Psychology	3
		11

1st Year Classes

Fall Term

NUR 1022	Nursing Theory I	4
NUR 1210C	Clinical Practice I	5
MCB 2010C	Microbiology or	
APB 2204C	Human Anatomy and Physiology II	5
NUR 1141	Introduction to Pharmacology	2
HUN 1201	Basic Normal Nutrition	3
		19

Spring Term

NUR 1023	Nursing Theory II	4
NUR 2211C	Clinical Practice II	5
MCB 2010	Microbiology or APB 2204C - Human	
	Anatomy and Physiology II	5
DEP 2004	Psychology of Human Development	3
		17

Summer A Term

NUR 2600C	Family Health	3
ENC 1102	Composition: Literature	3
		6

2nd Year Classes

Fall Term

NUR 2700	Nursing Theory III	5
NUR 2700L	Clinical Practice III	6
NUR 2801	Nursing Leadership	2
		13

Spring Term

NUR 2412	Nursing Theory IV	2
NUR 2500	Nursing Theory V	3
NUR 2412L	Clinical Practice IV	6
NUR 2800L	Clinical Practicum	4
		15

Total general education credits in general

curriculum 32

Total nursing credits 49

Total credits 81

*ENC 1132 Composition Skills, may be substituted

LPN Nursing Track Curriculum

Prerequisites:

APB 2203C	Human Anatomy and Physiology I	5
APB 2204C	Human Anatomy and Physiology II	5
MCB 2010C	Microbiology	5
PSY 2012	Introduction to Psychology	3
DEP 2004	Psychology of Human Development	3
HUN 1201	Basic Normal Nutrition	3
ENC 1101	College Composition I	3
		<hr/>
		27

Summer A Term

NUR 2003 - Nursing Transition	6
-------------------------------	---

Summer B Term

ENC 1102	3
----------	---

Fall Term

NUR 2700	Nursing Theory III	5
NUR 2700L	Clinical Practice III	6
NUR 2801	Nursing Leadership	2
		<hr/>
		13

Spring Term

NUR 2412	Nursing Theory IV	2
NUR 2500	Nursing Theory V	3
NUR 2412L	Clinical Practice IV	6
NUR 2800L	Clinical Practicum	4
		<hr/>
		15

Total general education credits	30
---------------------------------	----

Total nursing credits	<hr/> 34
-----------------------	----------

LPN Transition Curriculum	64
---------------------------	----

OFFICE SYSTEMS TECHNOLOGY

The purpose of this program is to provide the basic knowledge and skills necessary for students seeking employment in administrative support positions in offices and for students presently employed in some business career and desiring advancement. The program provides basic business education with specialization courses for executive and legal secretaries, medical assistants, and word processing personnel.

FRESHMAN YEAR

		<i>Credits</i>	
		<i>Fall</i>	<i>Spring</i>
OST 2325C	Business Machines and Filing		3
QMB 1001	Business Mathematics ¹		3
OST 1100C	Typewriting I	3	
OST 1110C	Typewriting II		3
OST 1330	Business English ¹	3	
MNA 1100	Human Relations in Business and Industry	3	
CIS 1400C	Introduction to Computer Operations		3
Electives	Specialization Area ²	<u>4</u>	<u>4</u>
		13	16

SUMMER TERM

OST 2120C	Typewriting III	3
-----------	-----------------	---

SOPHOMORE YEAR

OST 2336	Business Communications		3
GEB 1011	Introduction to Business		3
ACG 2001	Principles of Accounting I ³	4	
OST 2402C	Office Administration	3	
OST 2711C	Word Processing I	3	
OST 2722C	Word Processing II		3
BUL 2111	Business Law	3	
Electives	Specialization Area ²	<u>3</u>	<u>6</u>
		16	15

¹Student may be required to enroll in lower English, mathematics, and reading courses based on college placement tests.

²Student may select from approved courses. Cooperative Education Internship limited to 3-credit hours.

³Student may be requested to transfer to basic accounting class.

Student may waive sequential courses. See Academic Advisor.

Minimum hours in the program is 64 hours.

Legal Specialization

Shorthand I, II, III, IV (12)
Legal Office Procedures (3)
Elective (2)

or

Transcription I & II (6)
Legal Office Procedures (3)
Two Business Electives (6)
Elective (2)

Medical Specialization

Biology (5)
Medical Terminology & Records (3)
Medical Office Procedures (3)
Transcription I and II (6)

Executive Specialization

Shorthand I, II, III, IV (12)
Electives (2)
Business Elective (3)

or

Transcription I & II (6)
Three Business Electives (9)
Elective (2)

Word Processing Specialization

Composition Skills (4)
Technical Report Writing (3)
Transcription I and II (6)
Business Electives (3)
Elective (1)



date _____ subject _____

ARTICULATION PROGRAMS

Lake-Sumter Community College has formal articulation agreements with the Lake County Area Vocational-Technical Center in Criminal Justice and with Valencia Community college in Medical Laboratory Technology and Respiratory Therapy.

NOTICE TO STUDENTS. *It is important that you be familiar with complete descriptions in your program. These descriptions appear in this catalog. Consult the index for individual listings.*

ARTICULATION PROGRAM IN CRIMINAL JUSTICE

The Criminal Justice degree program is designed for persons presently employed in the field or those desiring preparation for employment. For those student entering this program who have completed the 320-hour Basic Corrections Training or the Basic Police Recruit Training at the Lake County Area Vocational-Technical Center, Lake-Sumter Community college will waive a maximum of twelve (12) elective credit hours upon the successful completion of six (6) hours credit in the Associate of Science in Criminal Justice Program.

Phase I: Lake County Area Vocational-Technical Center

320-hour Basic Corrections Training or Basic Police Recruit Training.

Phase II: Lake-Sumter Community College

CCJ 1000	Introduction to Criminology	3	credits
CCJ 1100	Introduction to Criminal Justice	3	credits
CCJ 1400	Police Organization & Administration	3	credits
CCJ 2220	Criminal Law	3	credits
CCJ 2230	Criminal Procedure & Evidence	3	credits
CCJ 2310	Introduction to Corrections	3	credits
CCJ 2500	Juvenile Delinquency	3	credits
CCJ 2600	Criminal Deviant Behavior	3	credits
CJT 2100	Introduction to Criminal Investigation	3	credits
CJT 2311	Advanced Firearms Training	3	credits
CJT 2110	Advanced Criminal Investigation	3	credits
CCJ 1800	Introduction to Security	3	credits
ENC 1101	College Composition I ¹	3	credits
ENC 2210	Technical Report Writing OR		
ENC 1102	Composition: Literature	3	credits
ISS 1011	Introduction to the Social Sciences	3	credits
MAT 0002	Introduction to Algebra	3	credits
ELECTIVES		4-16	credits
		*52-64	

¹Student may substitute ENC 1132.

*Contingent upon articulation agreement.

ARTICULATION PROGRAM IN MEDICAL LABORATORY TECHNOLOGY

This articulation program is designed for persons who desire preparation for employment as Medical Laboratory Technicians. Under this arrangement, students may complete the academic phase of their program at Lake-Sumter Community College and their specialized phase at Valencia Community College which will award the Associate in Science degree. Graduates are eligible to take the State Medical Laboratory Technician Examination for licensure and a national registry examination.

Phase I - Lake-Sumter Community College, Academic

SUMMER TERM

		<i>Credits</i>
BSC 1010C	General Biology ¹	5

FRESHMAN YEAR

		<i>Credits</i>	
		<i>Fall</i>	<i>Spring</i>
CHM 1025C	General Chemistry ²	5	
ENC 1101	College Composition I ³	3	
ENC 2210	Technical Report Writing		3
APB 2203C	Human Anatomy & Physiology I	5	
APB 2204C	Human Anatomy & Physiology II		5
MCB 2010C	Microbiology		5
POS 2041	American National Government		3
PSY 2012	Introduction to Psychology	3	
		<hr/> 16	<hr/> 16

Phase II - Valencia Community College⁴

	<i>Credits</i>
General Chemistry for Laboratory Technology	6
Hematology	4
Introduction to Urinalysis	3
Immunology	4
Medical Microbiology	4
Clinical Chemistry	4
Blood Bank Practicum	2
Instrumentation	1
Hematology Practicum	4
Chemistry Practicum	4
Micro Practicum	4
Serology/Urinalysis Practicum	2
Urinalysis	2
Serology/Immunology	2
Immunohematology	2
	<hr/> 48

¹ Prerequisite for APB 2203C and MCB 2010C or permission of the instructor.

² Students must have completed courses in algebra, biology with laboratory, and chemistry with laboratory at the high school or college level with a grade of "C" or higher in each course.

³ Student may substitute ENC 1132.

⁴ Consult the current Valencia Community college catalog for details of their phase of the program.

ARTICULATION PROGRAM IN RESPIRATORY THERAPY

This program is designed for persons who desire preparation for employment as Respiratory Therapists. Under this arrangement, students may complete the academic phase of their program at Lake-Sumter Community College and their specialized phase at Valencia Community College. Upon successful completion of Phase II, Valencia Community College will award the Associate in Science degree. Graduates of this program are eligible for the registration examination.

Phase I - Lake-Sumter Community College, Academic

SUMMER TERM

	<i>Credits</i>
BSC 1010C General Biology ¹	5

FRESHMAN YEAR

		<i>Credits</i>	
		<i>Fall</i>	<i>Spring</i>
CHM 1025C General Chemistry ²		5	
ENC 1101 College Composition I ³		3	
ENC 2210 Technical Report Writing			3
APB 2203C Human Anatomy & Physiology I	5		
APB 2204C Human Anatomy & Physiology II			5
MCB 2010C Microbiology			5
POS 2041 American National Government			3
PSY 2012 Introduction to Psychology	3		
HUMANITIES Elective ⁴			3
MAT 1033 Intermediate Algebra	3		
	<hr/> 19		<hr/> 19

Phase II - Valencia Community College⁵

Introduction to Respiratory Therapy	2
Applied Physics	4
Basic Respiratory Equipment	3
Pulmonary Physiology	4
Advanced Respiratory Equipment & Functions	4
Respiratory Pathology	3
Cardiopulmonary Therapy	4
Advanced Cardiopulmonary Therapy	4
Clinical Practice I, II, III, IV, V	10
Hospital Organization and Management	2
Introduction to Pharmacology	2
	<hr/> 42

¹Prerequisite for APB 2203C and MCB 2010C or permission of instructor.

²Students must have completed courses in algebra, biology with laboratory, and chemistry with laboratory at the high school or college level with a grade of C or higher in each course.

³Student may substitute ENC 1102 for the English requirement.

⁴Student may select from approved courses. Consult a college counselor.

⁵Consult the current Valencia Community college catalog for details of their phase of the program.

ARTICULATION PROGRAM IN EMERGENCY MEDICAL SERVICES

The Emergency Medical Services degree program is designed for students who desire a career in pre-hospital emergency medicine. The Emergency Medical Technician courses and the Paramedic courses will be taken at the Lake-County Area Vocational-Technical Center or other approved vocational technical centers or community colleges. The academic courses will be taken at Lake-Sumter Community College.

To register for the program, the student must hold current Florida certification as an EMT. The academic courses may be taken during the year the student is required to work as an EMT before being admitted to the Paramedic program.

Upon completion of all of the required courses at Lake-Sumter Community College with at least a 2.0 grade point average, 32 semester hours of credit will be waived upon current Florida licensure in Paramedic Medicine and the Associate of Science degree will be conferred by Lake-Sumter Community College.

Phase I: Lake-County Area Vocational-Technical Center

EMS 1114	Fundamentals of EMT	(4)
EMS 1115	Fundamentals of EMT Practicum	(2)
EMS 1431	EMT Clinical Practicum	(4)

Phase II: Lake-Sumter Community College

		<i>Credits</i>	
		<i>Fall</i>	<i>Spring</i>
ENC 1101	College Composition I	3	
APB 2203C	Human Anatomy & Physiology I ²	5	
APB 2204C	Human Anatomy & Physiology II		5
HUM 1020	Introduction to Humanities		3
PSY 2012	Introduction to Psychology	3	
SYG 2010	Social Problems		3
MAT 0024	Elementary Algebra ³		3
Electives		<u>6</u>	<u>3</u>
		17	17
Total Hours Required L-SCC courses			34

Electives to be selected from courses listed below. The courses selected will be determined by the student's future career and educational goals.

SPC 2016	Fundamentals of Speech	3
DEP 2004	Psychology of Human Development	3
POS 2041	American National Government	3
MNA 2021	Principles of Management	3
MNA 1100	Human Relations in Business and Industry	3

Phase III: Lake-County Area Vocational-Technical Center

EMS 1332	Medical Ethics	(2)
EMS 2219	Paramedic I	(4)
EMS 2219L	Hospital Clinical Practicum	(4)
EMS 1341	Extrication/Rescue	(3)
EMS 2229	Paramedic II	(4)
EMS 2229	Field Internship Practicum	(5)

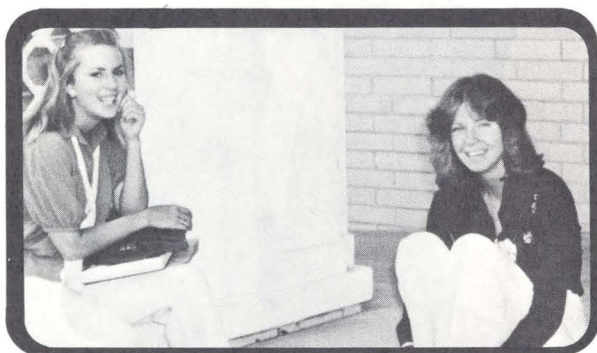
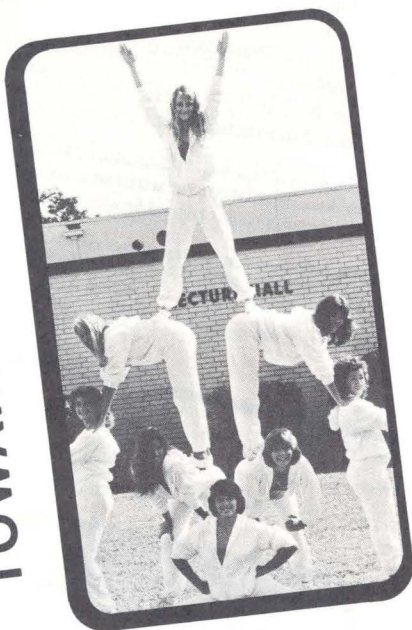
¹Registration Requirements: Successful completion of State Board Examination for Emergency Medical Technician.
 Graduation Requirements: Successful completion of all Lake-Sumter work with at least a 2.0 grade point average. Upon completion of the L-SCC course work, 32 semester hours of credit will be waived upon Florida licensure in Paramedic Medicine.

²Students may exempt one or both human anatomy and physiology courses via L-SCC tests and may then substitute five or ten hours credit from CHM 1025C, CHM 1205C, MCB 2010C. See Course Descriptions section of the catalog for prerequisites (if any) for these courses.

³Or higher mathematics course



THIS SIDE
TOWARD SCREEN



CERTIFICATE PROGRAMS

COMMERCIAL ART LAYOUT ARTIST

Lake-Sumter Community College provides a 30 credit hour certificate program for persons either presently employed in the field or for those desiring preparation for employment mainly in the technical area of layout and pasteup.

This certificate program, in contrast to the more comprehensive two-year A.S. degree program, provides only the basics of the necessary skills and knowledge needed in the field of commercial art. All credits may be applied toward the Commercial Art Associate in Science degree at Lake-Sumter Community College if the student decides later to continue his training.

		<i>Credits</i>
ENC 1101	College Composition I ¹	3
ART 1205	Design and Color	3
ART 1300	Freehand Drawing I	3
ART 1230	Introduction to Graphic Design	3
ARH 2050	Art History and Appreciation	3
ART 1231	Layout Production I	3
ART 1201C	Design Structures	3
ART 2540	Introduction to Painting: Watercolor I	3
ELECTIVE ²		3
ART 1301	Freehand Drawing II	3
		<hr/> 30

¹ Students may substitute ENC 1132.

² Select from ENC 1102, CGS 1461C, PSY 2012 or Computer Art Courses.

COMPUTER SCIENCE

Lake-Sumter Community college provides a 33 credit hour certificate program in Computer Science for present professionals or others desiring employment as computer programmers. All credits may be applied toward an Associate in Science degree at Lake-Sumter Community College.

		<i>Credits</i>
CGS 1000C	Introduction to Data Processing	3
COP 1000	Programming Logic Concepts	3
COP 2160C	Computer Programming - RPG	3
COP 2170C	Computer Programming - ADVANCED BASIC ¹	3
COP 2120C	Computer Programming - COBOL I	3
COP 2121C	Computer Programming - COBOL II	3
CET 2112	Digital Electronics	4
MTB 1321	Applied Technical Mathematics I ²	4
MTB 1322	Applied Technical Mathematics II ²	4
ELECTIVE ³		3
		<hr/> 33

¹ Student may need to take CGS 1461C if no previous programming.

² Students may substitute MAC 1132-2311.

³ Student may select from the courses shown below:

COP 2110C	Computer Programming-FORTRAN IV	3
COP 2180C	Computer Programming-PASCAL	3
COP 2400C	Machine Language Programming & Microprocessors	3
CIS 2321C	Systems Analysis and Design	3

CRIMINAL JUSTICE

Lake-Sumter Community college provides a 30-credit-hour certificate program for present professionals in the field or for those desiring preparation for employment. All credits may be applied toward an Associate in Arts degree at Lake-Sumter Community College.

		<i>Credits</i>
CJT 2311	Advanced Firearms Training	3
CJT 2100	Introduction to Criminal Investigation	3
CCJ 1000	Introduction to Criminology	3
CCJ 1100	Introduction to Criminal Justice	3
CCJ 2220	Criminal Law	3
CCJ 2230	Criminal Procedure and Evidence	3
CCJ 2310	Introduction to Corrections	3
CCJ 2500	Juvenile Delinquency	3
CCJ 2600	Criminal Deviant Behavior	3
ISS 1011	Introduction to the Social Sciences	3
		<hr/> 30

DATA PROCESSING

Lake-Sumter Community college provides a 34 credit hour certificate program in Data Processing for present professionals in the field or for those desiring preparation for employment. All credits may be applied toward an Associate in Science degree at Lake-Sumter Community College.

		<i>Credits</i>
ACG 2001	Principles of Accounting I	4
ACG 2011	Principles of Accounting II	3
CGS 1000C	Introduction to Data Processing	3
COP 1000	Programming Logic Concepts	3
COP 2120C	Computer Programming - COBOL I	3
COP 2121C	Computer Programming - COBOL II	3
COP 2160C	Computer Programming - RPG	3
GEB 1011	Introduction to Business	3
MNA 1100	Human Relations in Business and Industry	3
QMB 1001	Business Mathematics	3
OST 1191C	Personal Typewriting	3
		<hr/> 34

¹ Student may need to take CGS 1461C if no previous computer programming.

ELECTRONICS ENGINEERING TECHNOLOGY

Lake-Sumter Community College provides a 30 credit hour certificate program in Electronics Engineering Technology for present professionals or for others desiring employment in the digital electronics field. All credits may be applied toward an Associate in Science degree at Lake-Sumter Community College.

		<i>Credits</i>
CGS 1060C	Computer Literacy	1
CET 2112C	Digital Electronics	4
CET 2131C	Microcomputer Systems	5
EET 1015C	Fundamentals of DC Circuits	4
EET 1025C	Fundamentals of AC Circuits	4
EET 1141C	Electronic Devices	3
EET 2142C	Electronic Circuits	5
EET 2154C	Microelectronic Circuits	4
		<hr/> 30

WORD PROCESSING

Lake-Sumter Community College provides a 31 credit certificate program for present professionals in the field or for those desiring preparation for employment as word processing operators. All credits may be applied toward the Office Technology Associate in Science degree at Lake-Sumter Community College.

		<i>Credits</i>
OST 1100C	Typewriting I	3
OST 1110C	Typewriting II	3
OST 2120C	Typewriting III	3
OST 1330	Business English ¹	3
ENC 1132	Composition Skills	4
OST 2711C	Word Processing I	3
OST 2722C	Word Processing II	3
OST 2325C	Business Machines and Filing	3
OST 2336	Business Communications	3
QMB 1001	Business Mathematics	3
		<hr/> 31

¹ Students may be required to enroll in lower English and reading courses based on college placement tests.

² Minimum hours in the program is 30 hours.



THIS
TOWAR



FLORIDA'S STATEWIDE COURSE NUMBERING SYSTEM

The course numbers appearing in the catalog are part of a statewide system of prefixes and numbers developed for use by all public post-secondary and participating private institutions in Florida. One of the major purposes of this system is to make transferring easier by identifying courses which are equivalent, no matter where they are taught in the state. All courses designated as equivalent will carry the same prefix and last three digits.

The classifying and numbering of courses was done by community college and university faculty members in each academic discipline. Their work was reviewed by faculty members in all of Florida's post-secondary institutions who made suggestions and criticisms to be incorporated into the system.

The course numbering system is, by law, descriptive and not prescriptive. It in no way limits or controls what courses may be offered or how they are taught. It does not affect course titles or descriptions at individual schools. It seeks only to describe what is being offered in post-secondary education in Florida in a manner that is intelligible and useful to students, faculty, and other interested users of the system.

The course numbering system was developed so that equivalent courses could be accepted for transfer without misunderstanding. Each public institution is to accept for transfer credit any course which carries the same prefix and last three digits as a course at the receiving institution. For example, if a student has taken SYG __000 at a community college, he cannot be required to repeat SYG __000 at the school to which he transfers. Further, credit for any course or its equivalent, as judged by the appropriate faculty task force and published in the course numbering system, which can be used by a native student to satisfy degree requirements at a state university can also be used for that purpose by a transfer student regardless of where the credit was earned.

It should be noted that a receiving institution is not precluded from using *non-equivalent* courses for satisfying certain requirements.

General Rule for Course Equivalencies. All undergraduate courses bearing the same alpha prefix and last three numbers (and alpha suffix, if present) have been agreed upon to be equivalent. For example, an introductory course in sociology is offered in over 40 post-secondary institutions in Florida. Since these courses are considered to be equivalent, each one will carry the designator SYG __000.

First Digit. The first digit of the course number is assigned by the institution, generally to indicate the year it is offered — i.e., 1 indicates freshman year, 2 indicates sophomore year. In the sociology example mentioned above, the one school which offers the course in the freshman year will number it SYG 1000; a school offering the same course in the sophomore year will number it SYG 2000. The variance in first numbers does *not* affect the equivalency. If the prefix and last three digits are the same, the courses are substantively equivalent.

Titles. Each institution will retain its own title for each of its courses. The sociology courses mentioned above are titled at different schools "Introductory Sociology," "General Sociology," and "Principles of Sociology." The titles do *not* affect the equivalency. The courses all carry the same prefix and last three digits; that is what identifies them as equivalent.

Lab Indicators. Some courses will carry an alpha suffix indicating a lab. The alpha suffixes "L" and "C" are used as follows to indicate laboratories.

"L" means either (a) a course, the content of which is entirely laboratory or (b) the laboratory component of a lecture-lab sequence in which the lab is offered at a different time/place from the lecture.

"C" means a combined lecture-lab course in which the lab is offered in conjunction with the lecture at the same time/same place;

Examples:

Marine Biology, lecture only OCB__013

Marine Biology, lab only OCB__013L

Marine Biology, lecture and lab combined OCB__013C

Therefore, OCB __013C is equivalent to OCB __013 plus OCB __013L.

Equivalency of Sequences. In certain cases, sequences of courses in a given discipline are equivalent rather than the individual courses which make up these sequences, (For example, MAC __132, __133, __134). In these cases the subject matter topics may not be taught in the same sequence, course by course, in several institutions; however, upon completion of the full sequence at any of the several institutions, students have completed substantively equivalent content. These sequences are clearly identified in the Course Equivalency Profiles.

Explanation of Prefixes and Numbers. Prefixes and numbers in the course numbering system are not chosen at random; they are designed to describe course content in an organized fashion within a classification system developed for each subject matter area.

Generally, each of the major classifications in a discipline is represented by a three-alpha prefix. In some cases, one three-alpha prefix has been sufficient for the entire discipline. A discipline may use as many prefixes as necessary to accommodate its major classifications. The logic of the system allows it to be infinitely expandable with minimal disruption to existing numbers.

History, for example, has seven prefixes: AFH, African History; AMH, American History; ASH, Asian History; EUH, European History; HIS, History-General; LAH, Latin American History; and WOH World History. All history courses in the state will carry one of these prefixes.

A more specific example is AMH 3421, Early Florida History.

AMH represents a part of the discipline of History; more specifically an area of American History. The first digit, 3, indicates a junior level offering (at this particular institution). In the Taxonomy for AMH, the second digit, 4, represents areas in American History. The third digit, 2, indicates courses in the History of Florida. The last digit, in this case 1, refers to a group of equated courses dealing with the Early History of Florida.

Local titles are used for each particular course. The last three numbers are used to indicate equivalency. The number of prefixes is a function of the extent of the subclassifications of the given subject matter area.

When this work began there were 920 alpha prefixes in existence; with the new system there are now 370. As in most states there existed no uniformity in Florida's prefixes as indicated by the example below:

Discipline	Before	After
History	20	7
Sociology	24	3
Philosophy	23	4
Religion	17	1
Mathematics	50	10
English	39	6
Nutrition	38	4

Although it is true that a student majoring at one of the 38 participating institutions may have had only one alpha prefix for his major (e.g., HY-History) and now he will have seven, all prefixes in the same subject matter areas will be the same throughout these institutions.

A complete inventory of taxonomic listings, equivalent and unique courses, has been made available to each academic department of every institution in the state.

Students, through their local advisors, should use this information in designing programs which will transfer smoothly.

Exceptions to the Rule for Equivalencies. The following are exceptions to the general rule for course equivalencies:

A. All graduate level courses (except those which the faculty and their reviewing colleagues have determined to be substantively equivalent with undergraduate courses) are not automatically transferable.

B. All numbers which have a second digit of 9 (Ex.: ART 2905) are "place keeper" numbers for such courses as directed independent study, thesis hours, etc. Courses with 900 numbers must be evaluated individually and are not automatically transferable.

C. All internships, practicums, clinical experiences, and study abroad courses, whatever numbers they carry, are not automatically transferable.

D. Performance or studio courses in Art, Dance, Theatre, and Music are not automatically transferable but must be evaluated individually.

Authority for Acceptance of Equivalent Courses: The following amendments to Section 6A-10.24(7) of the Articulation Agreement was approved by the Community Colleges Council on Instructional Affairs, the Presidents' Council, the Division of Community Colleges, the State University System Council of Vice Presidents for Academic Affairs, the Council of Presidents, and the Board of Regents. It was adopted by the State Board of Education on May 7, 1978:

...students who earn credit in a course determined by the appropriate faculty task force to be equivalent and which is published in the state-wide course numbering system, and who later transfer to another institution within the system can transfer and use the credit in that course at the receiving institution for the same purpose as that course can be used by native students who complete the course at the receiving institution.

COURSE DESCRIPTIONS

ANTHROPOLOGY

ANT 2410 CULTURAL ANTHROPOLOGY

3 lecture hours - 3 credits

The comparative study of human cultural systems: an ecological approach will be employed to understand the concept of culture. Cultural processes such as origin, function, and change will be discussed. Components of cultural systems including language, social organizations, and subsistence activities will be analyzed. Contemporary world problems will be interpreted from a cultural perspective.

ART

ARE 2040 PROVIDING ART EXPERIENCES

3 lecture hours - 3 credits

Laboratory fee: \$10

This course is designed to provide competencies for anyone teaching art. Purposes, selection of experiences and materials, method of teaching, and evaluation of activities will be included.

ARH 1834 MUSEUM/GALLERY STUDIES

1 credit

The student will learn methods for the development and maintenance of archival records; computer linkage, library cataloging; and the organization and display of art works.

ARH 2050 ART HISTORY AND APPRECIATION

3 lecture hours - 3 credits

Offered Spring Term

An analysis and evaluation of art forms from Pre-History to the Renaissance and their correlation with the development of modern art. Familiarization with the basic tools and principles of art.

ARH 2051 ART HISTORY AND APPRECIATION

3 lecture hours - 3 credits

Offered Fall Term

An analysis and evaluation of art forms from the Renaissance to the Twentieth century. Familiarization with the basic tools and principles of art with emphasis on understanding contemporary trends.

ARH 2370 A BRIEF SURVEY OF 18TH AND 19TH CENTURY ARTS

1 lecture hour - 1
credit

A survey of the artists and of the historic changes that became the foundation of the modern art movement. The emphasis will be on the student's gaining an insight into the evolution of current trends in art.

ARH 2610 AMERICAN ART HISTORY AND APPRECIATION

3 lecture hours - 3 credits

A study and analysis of American art forms with an emphasis on the 19th and 20th centuries. A correlation will be made with the student's individual community bases by utilizing community field study techniques.